

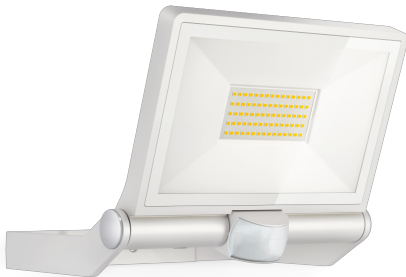
Sensor-switched LED floodlight

# XLED ONE XL Sensor

white

EAN 4007841 065270

Article number 065270



LED

long life LED  
50.000 h

3000 K

3000K  
warm-white



infrared sensor  
180°



max. 12 m



IP44



Sensor 180°  
vertical



Panel 180° vertical



2 - 2000 lux



8 sec - 35 min



indoor/outdoor  
light

## Function description

Powerful illumination. Effective protection. The XLED ONE XL Sensor wall and ceiling spot can be tilted through 180° and illuminates its surroundings with day-bright light. In numbers: 3000 K and 4200 lm from 42,6 W. With infrared sensor, 180° angle of coverage, 12 m reach, twilight setting (2-2000 lux) as well as time setting (8 s to 35 min). Protection class: IP44.

## Technical specifications

Dimensions (L x W x H)	222 x 259 x 215 mm
Mains power supply	230 – 240 V / 50 – 60 Hz
Sensor Technology	passive infrared
Output	42,6 W
Interconnection	No
Lichtstrom Gesamtprodukt	4200 lm
Gesamtprodukt Effizienz	99 lm/W
Colour temperature	3000 K
Colour variation LED	SDCM6
With lamp	Yes, STEINEL LED system
Lamp	LED cannot be replaced
LED life expectancy (max. °C)	50000 h
Drop in luminous flux in accordance with LM80	L70B10
Base	without
LED cooling system	Passive Thermo Control
With motion detector	Yes
Detection angle	180 °
Capability of masking out individual segments	Yes
Electronic scalability	No
Mechanical scalability	No

Reach, radial	r = 3 m (14 m <sup>2</sup> )
Reach, tangential	r = 12 m (226 m <sup>2</sup> )
Photo-cell controller	Yes
Twilight setting	2 – 2000 lx
Time setting	8 s – 35 Min.
Basic light level function	No
Main light adjustable	No
Soft light start	No
Impact resistance	IK03
IP-rating	IP44
Protection class	I
Ambient temperature	-20 – 40 °C
Housing material	Aluminium
Cover material	Glass transparent
Manufacturer's Warranty	3 years
Settings via	Potentiometers
Installation site	wall, ceiling
Cover material	sticker
Version	white
PU1, EAN	4007841065270

<https://www.steinell.de>

Subject to technical modifications

02.2022

Page 1 from 2

Sensor-switched LED floodlight

# XLED ONE XL Sensor

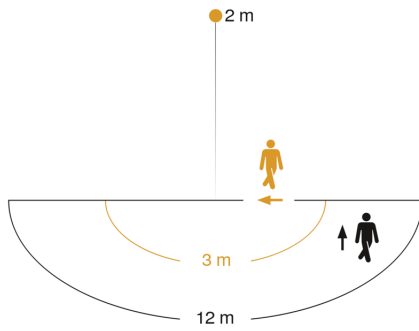
white

EAN 4007841 065270

Article number 065270



## Detection Zone



Mögliche Montagehöhe: 1,80 m – 3,00 m

Orange: radial

Schwarz: tangential

## Dimension Drawing

