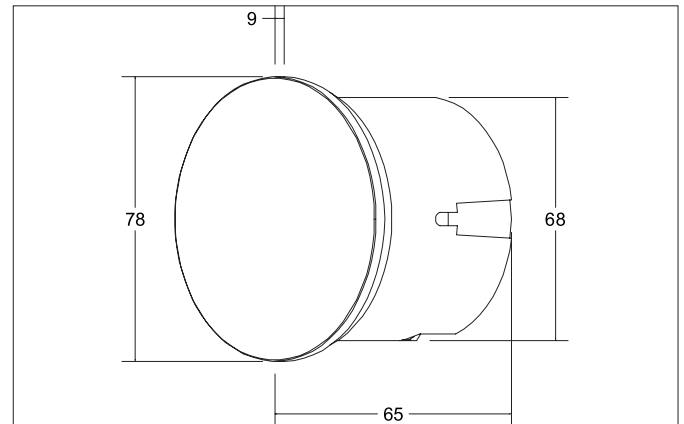
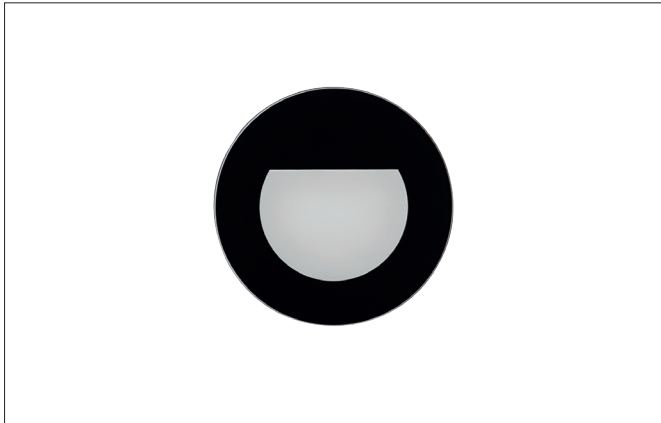


WALL KIT68 LED wall recessed light WALL KIT68, for device socket

Artikel-Nr. 10158083

Licht.
Für Generationen.**Tender**

LED wall recessed light WALL KIT68, for device socket, black, round. Recessed mounting, Wall-mounted. For installation in cavity wall or concrete device boxes with an installation depth of at least 62 mm (screw distance: 60 mm). Compatible with Kaiser device sockets for cavity wall installation, product no. 9064-02 or 9464-02 or concrete installation, product no. 1556-04. Attention! The delivery is WITHOUT a device socket. Mounting method: Recessed mounting, Place of installation: Wall-mounted, Material: Aluminium / Steel / Glass/ Plastic, Degree of protection: according to DIN EN 60529 IP20, Protection class: (EN 61140) I, Voltage: 230V AC 50Hz, Power: 1.5W, Amount of light sources / fittings: 1.0 Qty, Luminous flux: 35lm, Colour temperature: 3.000 K, Light colour : White, With control gear: Yes, Control:

Article data	
Artikel-Nr.	10158083
GTIN	4251433927075
Series name	WALL KIT68
Kurzbeschreibung	LED wall recessed light WALL KIT68, for device socket
Material	Aluminium / Steel / Glass/ Plastic
Colour	Black
Shape	round
Built-in diameter	68 mm
Installation depth	65 mm
Length	78 mm
Width	78 mm
Aufbauhöhe	50 mm
scope of delivery	With cover glass
weight	0.161 kg

WALL KIT68 LED wall recessed light WALL KIT68, for device socket

Artikel-Nr. 10158083

Licht.
Für Generationen.

Lighting technology	
Colour temperature	3000 K
Light colour	White
Luminous flux	35 lm
System efficiency	23 lm/W
Colour rendering	CRI > 90
Reflector	Without
Light sharing	Symmetric

Operating technology of the luminaires	
System output	1.5 W
Voltage type	AC
AC nominal voltage max	230 V
Frequenz max.	50 Hz
Lamp	LED
Protection class	I
Degree of protection	IP20
Control	on/off
Leuchtmittelwechsel möglich	ja

Mounting technology	
Mounting method	Recessed mounting
Place of installation	Wall-mounted
Adjustability	Not adjustable
Material cover	Glass opal

Packing data	
Gross weight	0.202 kg
Length of packaging	90 mm
Packaging width	55 mm
Packaging height	109 mm