

Controllable (1-10 V) electronic ballasts for T5 fluorescent lamps

freedom in lighting

14-80 W 220-240 V, 50-60 Hz

- Switch-Control / Analogue control¹⁾
- Only 21 mm high
- Standard & sidemount possibilities
- Dimming range 1-100 %²⁾
- Microprocessor controlled
- User friendly, quick release connectors
- Low energy consumption
- Stabilised, flickerfree light output



A1



Lamp type	Wattage	No. of lamps	Ballast	EEI	Dimensions	Connection	Weight	Circuit power	Mains current	Lamp power
						(p.14)	(g)	(W)	(A)	(W)
T5	14	1	EL1x14sc	A1	1	8	270	17	0.08-0.07	13.7
	14	2	EL2x14sc	A1	2	9	340	31	0.15-0.14	13.7
	14	4	EL4x14sc ²⁾	A1	2	10	340	62	0.29-0.27	13.7
	21	1	EL1x21sc	A1	1	8	270	24	0.11-0.10	20.7
	21	2	EL2x21sc	A1	2	9	340	46	0.22-0.20	20.7
	24	1	EL1x24sc	A1	1	8	270	26	0.13-0.12	22.5
	24	2	EL2x24sc	A1	2	9	340	50	0.24-0.20	22.5
	28	1	EL1x28sc	A1	1	8	270	31	0.15-0.14	27.8
	28	2	EL2x28sc	A1	2	9	340	64	0.30-0.28	27.8
	35	1	EL1x35sc	A1	1	8	270	39	0.18-0.17	34.7
	35	2	EL2x35sc	A1	2	9	340	78	0.36-0.34	34.7
	39	1	EL1x39sc	A1	1	8	270	42	0.20-0.18	38
	39	2	EL2x39sc	A1	2	9	340	83	0.40-0.36	38
	49	1	EL1x49sc	A1	1	8	270	55	0.25-0.23	49.3
	49	2	EL2x49sc	A1	2	9	340	106	0.50-0.46	49.3
	54	1	EL1x54sc	A1	1	8	270	61	0.28-0.26	53.8
54	2	EL2x54sc	A1	2	9	340	118	0.53-0.49	53.8	
80	1	EL1x80sc	A1	1	8	270	88	0.41-0.38	80	

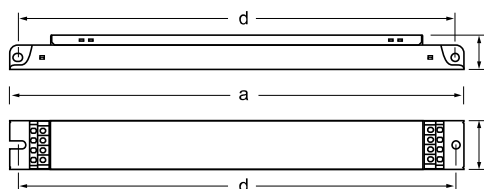
Note: See pages 14-17 for connection diagrams and additional characteristics.

1) Simultaneous lighting control by Switch-Control and Analogue control

2) Dimming range 3-100 % for EL 4x14sc

For information on compatibility with amalgam lamps, please contact your local Helvar representative.

Dimensions	1	2
Length 'a' (mm)	360	430
Width 'b' (mm)	30	30
Height 'c' (mm)	21	21
'd' (mm)	350	420



Delivery information					
Ballast	Unit package		Transportation package		
	Minimum delivery amount	Plastic binding strip	EUR pallet 1200 x 800 (pcs.)	Pallet weight (kg)	Pallet height (cm)
EL1 x sc	10	●	980	300	40
EL2 x sc	10	●	840	325	43
EL4 x sc	10	●	840	325	43

Controllable (1-10 V) electronic ballasts for T5-eco fluorescent lamps *freedom in lighting*

14-80 W 220-240 V, 50-60 Hz

- Switch-Control / Analogue control ¹⁾
- Only 21 mm high
- Standard & sidemount possibilities
- Dimming range 1-100 % ²⁾
- Microprocessor controlled
- User friendly, quick release connectors
- Low energy consumption
- Stabilised, flickerfree light output



A1

Lamp type	Wattage	No. of lamps	Ballast	EEI	Dimensions	Connection	Weight	Circuit power	Mains current	Lamp power ³⁾
						(p.14)	(g)	(W)	(A)	(W)
T5 eco	14 eco	1	EL1x14sc	A1	1	8	270	17	0.08-0.07	13.7
	14 eco	2	EL2x14sc	A1	2	9	340	31	0.15-0.14	13.7
	14 eco	4	EL4x14sc ²⁾	A1	2	10	340	62	0.29-0.27	13.7
	21 eco	1	EL1x21sc	A1	1	8	270	24	0.11-0.10	20.7
	21 eco	2	EL2x21sc	A1	2	9	340	46	0.22-0.20	20.7
	24 eco	1	EL1x24sc	A1	1	8	270	26	0.13-0.12	22.5
	24 eco	2	EL2x24sc	A1	2	9	340	50	0.24-0.20	22.5
	28 eco	1	EL1x28sc	A1	1	8	270	31	0.15-0.14	27.8
	28 eco	2	EL2x28sc	A1	2	9	340	64	0.30-0.28	27.8
	35 eco	1	EL1x35sc	A1	1	8	270	39	0.18-0.17	34.7
	35 eco	2	EL2x35sc	A1	2	9	340	78	0.36-0.34	34.7
	49 eco	1	EL1x49sc	A1	1	8	270	55	0.25-0.23	49.3
	49 eco	2	EL2x49sc	A1	2	9	340	106	0.50-0.46	49.3
	54 eco	1	EL1x54sc	A1	1	8	270	61	0.28-0.26	53.8
	54 eco	2	EL2x54sc	A1	2	9	340	118	0.53-0.49	53.8
	80 eco	1	EL1x80sc	A1	1	8	270	88	0.41-0.38	80

Note: See pages 14-17 for connection diagrams and additional characteristics.

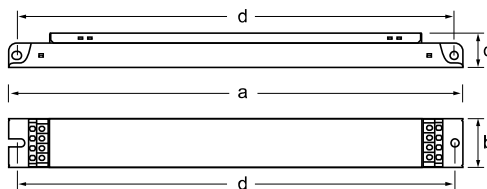
1) Simultaneous lighting control by Switch-Control and Analogue control

2) Dimming range 3-100 % for EL 4x14sc

3) Powercontrolled products, no energy saving when ecolamps are used. Lamps are running over powered.

For information on compatibility with amalgam lamps, please contact your local Helvar representative.

Dimensions	1	2
Length 'a' (mm)	360	430
Width 'b' (mm)	30	30
Height 'c' (mm)	21	21
'd' (mm)	350	420



Delivery information					
Ballast	Unit package		Transportation package		
	Minimum delivery amount	Plastic binding strip	EUR pallet 1200 x 800 (pcs.)	Pallet weight (kg)	Pallet height (cm)
EL1 x sc	10	●	980	300	40
EL2 x sc	10	●	840	325	43
EL4 x sc	10	●	840	325	43