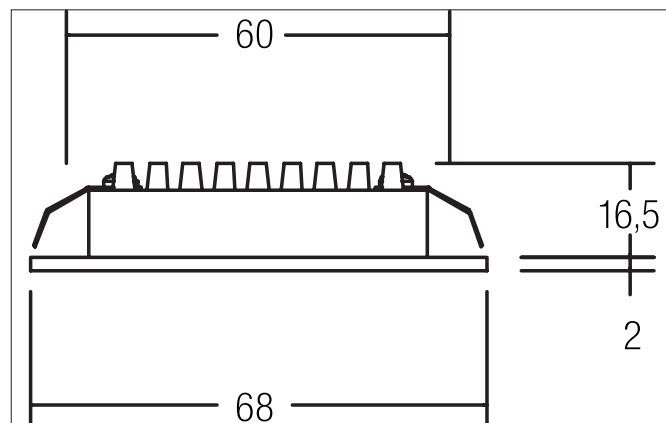


LED recessed downlight

Artikel-Nr. 12090083

Licht.
Für Generationen.**Tender**

LED recessed downlight, black, round. In a compact design, for installation in tool-less rapid assembly systems. Lamp optimized for installation in furniture and wood-based materials. Lamp holder: Plug&Play, Mounting method: Recessed mounting, Place of installation: Ceiling-mounted, Material: Aluminium / Plastic, Degree of protection: according to DIN EN 60529 IP20, Protection class: (EN 61140) III, Current: 350 mA, Power: 3W, Amount of light sources / fittings: 1.0 Qty, Luminous flux: 300lm, Colour temperature: 3.000 K, Light colour : White, Beam angle: 120°, Adjustability: Not adjustable, With control gear: No, Control: Dimming depending on driver.

Article data	
Artikel-Nr.	12090083
GTIN	4250047794059
Kurzbeschreibung	LED recessed downlight
Material	Aluminium / Plastic
Colour	Black
Type of surface	Matt
Shape	round
Outer diameter	68 mm
Built-in diameter	60 mm
Installation depth	16.5 mm
weight	0.064 kg

LED recessed downlight

Artikel-Nr. 12090083

Licht.
Für Generationen.

Lighting technology	
Colour temperature	3000 K
Light colour	White
Light output	Direct
Luminous flux	300 lm
System efficiency	100 lm/W
Colour rendering	CRI > 80
Reflector	High-gloss
Beam angle	120 °
Light sharing	Symmetric

Operating technology of the luminaires	
System output	3 W
Voltage type	DC
Current	350 mA
Lamp	LED
Lamp holder	Plug&Play
Protection class	III
Degree of protection	IP20
Converter - possible luminaire 1 pc.	17666 17662 17613 17621 17663 17648
Control	Dimming depending on driver
Leuchtmittelwechsel möglich	ja

Mounting technology	
Mounting method	Recessed mounting
Place of installation	Ceiling-mounted
Adjustability	Not adjustable
Further references	No cover with thermal insulation material
Material cover	Plastic, transparent

Packing data	
Gross weight	0.079 kg
Length of packaging	70 mm
Packaging width	47 mm
Packaging height	81 mm

LED recessed downlight

Artikel-Nr. 12090083

Licht.
Für Generationen.

Accessories	
	<p>Artikel-Nr.: 17666000 Kurzbeschreibung: LED converter 350 mA, on/off Leistung: 1 - 5 W Abmessung: 52 mm x 30 mm x 23 mm</p>
	<p>Artikel-Nr.: 17662020 Kurzbeschreibung: LED converter 350 mA, on/off Leistung: 1 - 7,2 W Abmessung: 68 mm x 35 mm x 21 mm</p>
	<p>Artikel-Nr.: 17613000 Kurzbeschreibung: LED converter 350 mA, on/off Leistung: 1 - 15 W Abmessung: 115 mm x 34 mm x 19 mm</p>
	<p>Artikel-Nr.: 17621020 Kurzbeschreibung: LED converter 350 mA, on/off Leistung: 1 - 21 W Abmessung: 128 mm x 50 mm x 13 mm</p>
	<p>Artikel-Nr.: 17663020 Kurzbeschreibung: LED converter 350 mA, trailing-edge phase dimmable Leistung: 2,8 - 7 W Abmessung: 110 mm x 50 mm x 19 mm</p>
	<p>Artikel-Nr.: 17648020 Kurzbeschreibung: LED converter 350 mA, trailing-edge phase dimmable Leistung: 0,7 - 17 W Abmessung: 166 mm x 46 mm x 34 mm</p>