



- + Standard Bauform – Extra Leistung
Standard shape – extra performance
- + 100.000 h geeignet für Zone 2 Ex
100,000 h suitable for zone 2 hazardous areas
- + Ein- und zweilampig – Ein Gerät
Single- and double lamp drive – one ballast



neu
new

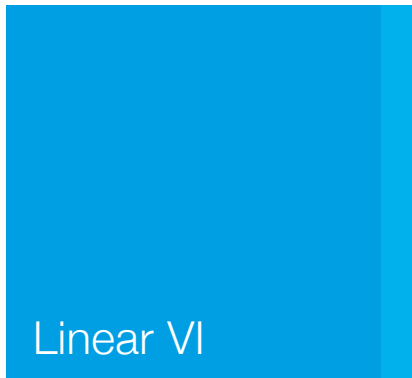
Flach. Stark. Spart.
Flat. Strong. Saves.

Linear VI

Luxtronic[®]

Die Lösung für professionelles Licht mit höchsten Anforderungen auch – und gerade im Ex-Bereich.

The solution for professional lighting with highest requirements especially in hazardous areas, too.



- + **Standard-Bauform 360 x 30 x 21 mm**
14 – 35 W T 5, 18, 36, 58 W T 8
- + **Ein- und zweiflammig in einem Gerät**
– spart Lagerkosten und vereinfacht die Lagerhaltung
- + **Ex-Zulassung mit Konformitätsaussage**
– erleichtert die Leuchtzulassung und gibt Sicherheit
- + **Lebensdauer von 100.000 h bei ta = 60 °C**
Wirtschaftlich: Reduziert die Austauschkosten
- + **Standard-flat 360 x 30 x 21 mm**
14 – 35 W T 5, 18, 36, 58 W T 8
- + **Single- and double lamp drive in one ballast**
– saves stock holding cost and increases availability
- + **Ex-certification with statement of conformity**
– for easy luminaire certification and extra safety
- + **Service life of 100,000 h at ta = 60 °C**
economic: reduces replacement cost

Technische Daten

Abmessungen:	360 x 30 x 21 mm
Temperaturbereich:	-20 °C – 60 °C
Lebensdauer:	100.000 h bei ta = 60 °C
Versorgungsspannung:	220 V – 240 V, 0 / 50 – 60 Hz
Zertifikat:	ENEC, ATEX, IEC Ex, CE

Technical Data

Dimensions:	360 x 30 x 21 mm
Temperature range:	-20 °C – 60 °C
Service life:	100,000 h at ta = 60 °C
Voltage range:	220 V – 240 V, 0 / 50 – 60 Hz
Certificate:	ENEC, ATEX, IEC Ex, CE



Sie benötigen ein Muster oder eine besondere Ausführung ?

You need a sample or a different version, you have questions or ideas ?

Vorname, Name Prenom, name

Firma Company

Straße Street

PLZ/Ort CIP code

Land Country

Muster Best.-Nr.: Sample part.-no.:

Anruf call me

Hadler GmbH

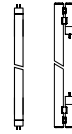
Fritzlärer Straße 19
34587 Felsberg-Neuenbrunslar
Tel.: +49 5662 9399-0
Fax: +49 5662 9399-29
E-Mail: info@hadler-gmbh.de

www.luxtronic.de




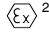
Mehr Informationen finden Sie unter:
www.luxtronic.de/Linear_VI

Luxtronic®



14 - 35 W
230 V

Technical data

Lamp type	T5 / SLS
Lamp start	Warm start, t < 1.5 s
Mains voltage range	220 - 240 V, 0 / 50 - 60 Hz
AC voltage range	198 to 264 V
DC voltage range ¹⁾	176 to 264 V
Ambient temperature range ta	- 20 °C to 60 °C
Case temperature tc	75 °C
Temperature protection	110 °C acc. EN 61347-1 C.6 e
RI supression	EN 55015
Line harmonics	EN 61000-3-2
Immunity	EN 61547
Safety	EN 61347-1 and 2-3
Function	EN 60929
EOL Test circuit	acc. EN 61347-2-3 17.2 and .3
Approval marks	  ²⁾
Interface	n. a.
Control current	n. a.
Dimming range	n. a.
Emergency lighting acc. VDE 0108	suitable
Wire cross-section	0.5 to 1.5 mm ²
Order number	3 P 135 18 0

Dimensions


Length x Width x Height	360 x 30 x 21mm
Mounting holes distances D1, D2	350 mm
Weight	ca. 0.190 kg
Packaging unit	20 pcs.

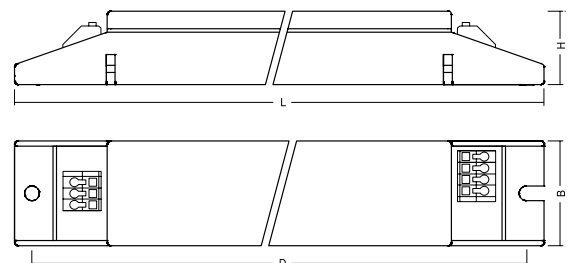
Product features

Suitable for usage in ex-protected luminaires for zone 2
Automatic restart after lamp replacement

Remarks

¹⁾ Battery voltage may drop to 176 V
Starting voltage > 198 V

²⁾ Component approved acc. IEC 60079-15
 II 3 G Ex nA IIC Gc / TÜV 10 ATEX 555817 U
at ta -20...+60 °C / tc max. 75 °C



Technical data

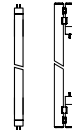
Lamp power	Lamp type	EEI	at 230 V / 50 Hz	
			Current	λ
1 x 14 W	T5 / SLS		0.08 A	
1 x 21 W	T5 / SLS		0.11 A	
1 x 28 W	T5 / SLS		0.14 A	
1 x 35 W	T5 / SLS		0.17 A	0.95

No. of ECG per circuit

Typ	pcs.
B 10 (10 A)	17
C 10 (10 A)	28
B 16 (16 A)	27
C 16 (16 A)	46


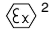
Expected lifetime

Lamp power	Lamp type	ta	40 °C	50 °C	55 °C	60 °C	65 °C	70 °C	75 °C	80 °C
1 x 35 W	T5 / SLS	tc				75 °C				
		Lifetime				50,000 h				



14 - 35 W
230 V

Technical data

Lamp type	T5 / SLS
Lamp start	Warm start, t < 1.5 s
Mains voltage range	220 - 240 V, 0 / 50 - 60 Hz
AC voltage range	198 to 264 V
DC voltage range ¹⁾	176 to 264 V
Ambient temperature range ta	- 20 °C to 60 °C
Case temperature tc	75 °C
Temperature protection	110 °C acc. EN 61347-1 C.6 e
RI supression	EN 55015
Line harmonics	EN 61000-3-2
Immunity	EN 61547
Safety	EN 61347-1 and 2-3
Function	EN 60929
EOL Test circuit	acc. EN 61347-2-3 17.2 and .3
Approval marks	  ²⁾
Interface	n. a.
Control current	n. a.
Dimming range	n. a.
Emergency lighting acc. VDE 0108	suitable
Wire cross-section	0.5 to 1.5 mm ²
Order number	3 P 235 18 0

Dimensions


Length x Width x Height	360 x 30 x 21mm
Mounting holes distances D1, D2	350 mm
Weight	ca. 0.190 kg
Packaging unit	20 pcs

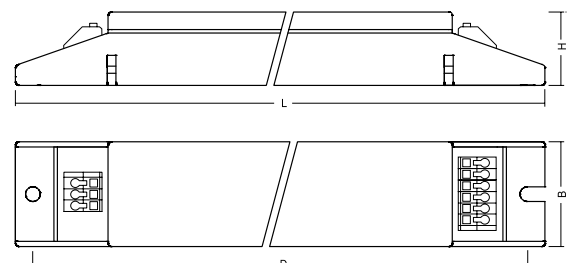
Product features

Suitable for usage in ex-protected luminaires for zone 2
Automatic restart after lamp replacement

Remarks

¹⁾ Battery voltage may drop to 176 V
Starting voltage > 198 V

²⁾ Component approved acc. IEC 60079-15
 II 3 G Ex nA IIC Gc / TÜV 10 ATEX 555817 U
at ta -20...+60 °C / tc max. 75 °C



Technical data

Lamp power	Lamp type	EEI	at 230 V / 50 Hz	
			Current	λ
2 x 14 W	T5 / SLS		0.13 A	
2 x 21 W	T5 / SLS		0.20 A	
2 x 28 W	T5 / SLS		0.26 A	
2 x 35 W	T5 / SLS		0.33 A	0.98

No. of ECG per circuit

Typ	pcs.
B 10 (10 A)	8
C 10 (10 A)	13
B 16 (16 A)	13
C 16 (16 A)	22


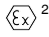
Expected lifetime

Lamp power	Lamp type	ta	40 °C	50 °C	55 °C	60 °C	65 °C	70 °C	75 °C	80 °C
2 x 35 W	T5 / SLS	tc				75 °C				
		Lifetime				50,000 h				



18 W
230 V

Technical data

Lamp type	T8
Lamp start	Warm start, $t < 1$ s
Mains voltage range	220 - 240 V, 0 / 50 - 60 Hz
AC voltage range	198 to 264 V
DC voltage range ¹⁾	176 to 264 V
Ambient temperature range t_a	- 25 °C to 75 °C
Case temperature t_c	80 °C
Temperature protection	110 °C acc. EN 61347-1 C.6 e
RI supression	EN 55015
Line harmonics	EN 61000-3-2
Immunity	EN 61547
Safety	EN 61347-1 and 2-3
Function	EN 60929
EOL Test circuit	acc. EN 61347-2-3 17.2 and .3
Approval marks	  ²⁾
Interface	n. a.
Control current	n. a.
Dimming range	n. a.
Emergency lighting acc. VDE 0108	suitable
Wire cross-section	0.5 to 1.5 mm ²
Order number	3 P 218 08 0


Dimensions

Length x Width x Height	360 x 30 x 21mm
Mounting holes distances D1, D2	350 mm
Weight	ca. 0.180 kg
Packaging unit	20 pcs.

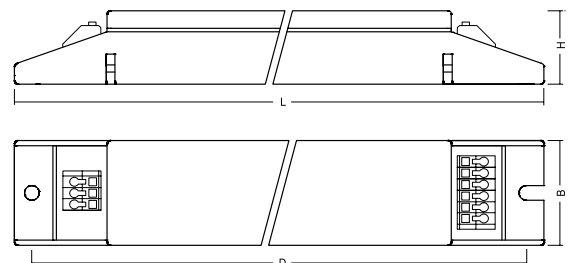
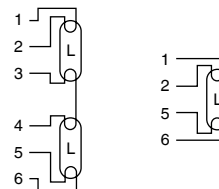
Product features

Suitable for usage in ex-protected luminaires for zone 2
Automatic restart after lamp replacement

Remarks

- Battery voltage may drop to 176 V
Starting voltage > 198 V
- Component approved acc. IEC 60079-15
 II 3 G Ex nA IIC Gc / TÜV 12 ATEX 105421 U
at t_a -25...+75 °C / t_c max. 80 °C

Terminal configuration



Technical data

Lamp power	Lamp type	EEI	at 230 V / 50 Hz	
			Current	λ
1 x 18 W	T8	A2BAT	0.09 A	0.83 C
2 x 18 W	T8	A2BAT	0.16 A	0.94 C


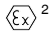
No. of ECG per circuit

Typ	pcs.
B 10 (10 A)	11
C 10 (10 A)	18
B 16 (16 A)	17
C 16 (16 A)	29

Expected lifetime

Lamp power	Lamp type	ta	40 °C	50 °C	55 °C	60 °C	65 °C	70 °C	75 °C	80 °C
			1 x 18 W	T8	tc	45 °C	55 °C	60 °C	65 °C	70 °C
			>100,000 h	>100,000 h	>100,000 h	>100,000 h	>100,000 h	88,000 h	63,000 h	
2 x 18 W	T8	tc	50 °C	55 °C	60 °C	65 °C	70 °C	75 °C	80 °C	Lifetime
			>100,000 h	>100,000 h	>100,000 h	>100,000 h	>100,000 h	80,000 h	58,000 h	

Technical data

Lamp type	T8
Lamp start	Warm start, $t < 1$ s
Mains voltage range	220 - 240 V, 0 / 50 - 60 Hz
AC voltage range	198 to 264 V
DC voltage range ¹⁾	176 to 264 V
Ambient temperature range t_a	- 25 °C to 70 °C
Case temperature t_c	75 °C
Temperature protection	110 °C acc. EN 61347-1 C.6 e
RI supression	EN 55015
Line harmonics	EN 61000-3-2
Immunity	EN 61547
Safety	EN 61347-1 and 2-3
Function	EN 60929
EOL Test circuit	acc. EN 61347-2-3 17.2 and .3
Approval marks	  ²⁾
Interface	n. a.
Control current	n. a.
Dimming range	n. a.
Emergency lighting acc. VDE 0108	suitable
Wire cross-section	0.5 to 1.5 mm ²
Order number	3 P 236 08 0

Dimensions


Length x Width x Height	360 x 30 x 21mm
Mounting holes distances D1, D2	350 mm
Weight	ca. 0.180 kg
Packaging unit	20 pcs.

Product features

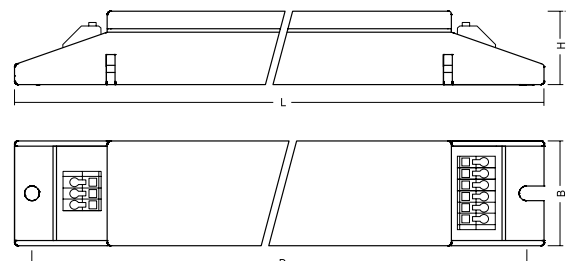
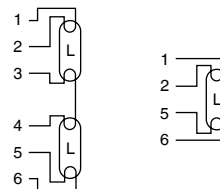
Suitable for usage in ex-protected luminaires for zone 2
Automatic restart after lamp replacement

Remarks

¹⁾ Battery voltage may drop to 176 V
Starting voltage > 198 V

²⁾ Component approved acc. IEC 60079-15
 II 3 G Ex nA IIC Gc / TÜV 12 ATEX 105421 U
at t_a -25...+70 °C / t_c max. 75 °C

Terminal configuration



Technical data

Lamp power	Lamp type	EEI	at 230 V / 50 Hz	
			Current	λ
1 x 36 W	T8	A2BAT	0.15 A	0.96
2 x 36 W	T8	A2BAT	0.29 A	0.99


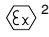
No. of ECG per circuit

Typ	pcs.
B 10 (10 A)	11
C 10 (10 A)	18
B 16 (16 A)	17
C 16 (16 A)	29

Expected lifetime

Lamp power	Lamp type	ta	40 °C	50 °C	55 °C	60 °C	65 °C	70 °C	75 °C	80 °C
			1 x 36 W	T8	tc	45 °C	55 °C	60 °C	65 °C	70 °C
		Lifetime	>100,000 h	>100,000 h	>100,000 h	>100,000 h	98,000 h	70,000 h		
2 x 36 W	T8	tc	45 °C	55 °C	60 °C	65 °C	70 °C	75 °C		
		Lifetime	>100,000 h	>100,000 h	>100,000 h	88,000 h	67,000 h	47,000 h		

Technical data

Lamp type	T8
Lamp start	Warm start, $t < 1$ s
Mains voltage range	220 - 240 V, 0 / 50 - 60 Hz
AC voltage range	198 to 264 V
DC voltage range ¹⁾	176 to 264 V
Ambient temperature range t_a	- 25 °C to 65 °C
Case temperature t_c	70 °C
Temperature protection	110 °C acc. EN 61347-1 C.6 e
RI supression	EN 55015
Line harmonics	EN 61000-3-2
Immunity	EN 61547
Safety	EN 61347-1 and 2-3
Function	EN 60929
EOL Test circuit	acc. EN 61347-2-3 17.2 and .3
Approval marks	  ²⁾
Interface	n. a.
Control current	n. a.
Dimming range	n. a.
Emergency lighting acc. VDE 0108	suitable
Wire cross-section	0.5 to 1.5 mm ²
Order number	3 P 258 08 0

Dimensions


Length x Width x Height	360 x 30 x 21mm
Mounting holes distances D1, D2	350 mm
Weight	ca. 0.180 kg
Packaging unit	20 pcs.

Product features

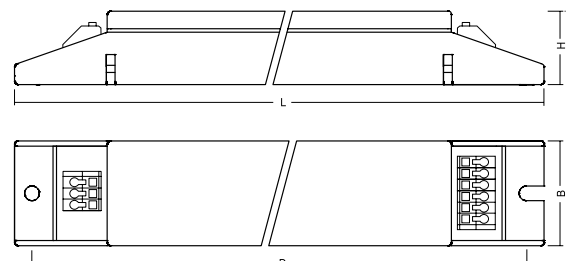
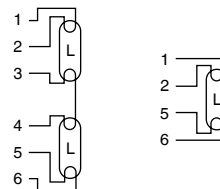
Suitable for usage in ex-protected luminaires for zone 2
Automatic restart after lamp replacement

Remarks

¹⁾ Battery voltage may drop to 176 V
Starting voltage > 198 V

²⁾ Component approved acc. IEC 60079-15
 II 3 G Ex nA IIC Gc / TÜV 12 ATEX 105421 U
at t_a -25...+65 °C / t_c max. 70 °C

Terminal configuration



Technical data

Lamp power	Lamp type	EEI	at 230 V / 50 Hz	
			Current	λ
1 x 58 W	T8	A2BAT	0.24 A	0.98
2 x 58 W	T8	A2BAT	0.44 A	0.99

No. of ECG per circuit

Typ	pcs.
B 10 (10 A)	8
C 10 (10 A)	13
B 16 (16 A)	13
C 16 (16 A)	22

Expected lifetime

Lamp power	Lamp type	ta	40 °C	50 °C	55 °C	60 °C	65 °C	70 °C	75 °C	80 °C
			tc	45 °C	55 °C	60 °C	65 °C	70 °C		
1 x 58 W	T8	Lifetime	>100,000 h	>100,000 h	>100,000 h	>100,000 h	>100,000 h			
2 x 58 W	T8	tc	50 °C	60 °C	60 °C	65 °C	70 °C			
		Lifetime	>100,000 h	>100,000 h	96,000 h	89,000 h	69,000 h			