

Description

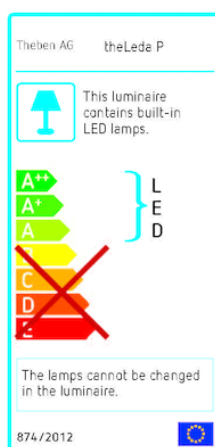


- LED spotlight
- 11 W (900 lm), equivalent to 140 W Halogen spotlight
- Spotlight can be swivelled 35° left/right, 60° upwards/downwards and 180° backwards
- Spacer included in delivery
- Suitable for outdoor use
- Diffused glare-free light with aura effect
- Master/slave switching
- Back side made of high-quality aluminum die-cast for an optimally cooling of the high-power LEDs

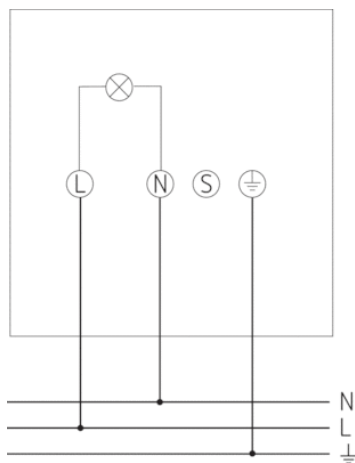
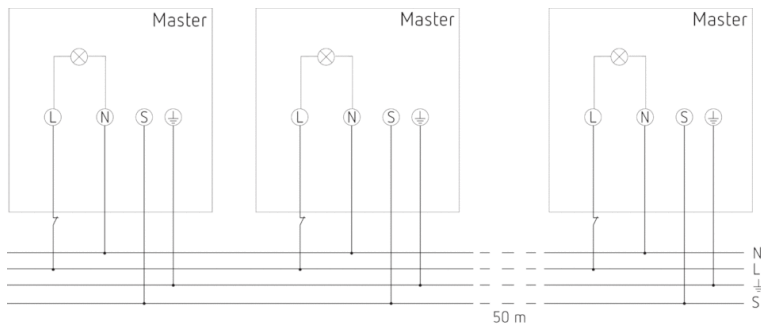
Technical data

Operating voltage	230 V AC
Frequency	50 – 60 Hz
Stand-by consumption	~0,4 W
Colour	Aluminium
Switching output	Light
Installation type	Wall installation
LED output (lighting current)	11 W (900 lm)
Colour temperature	4000 K, neutral white
Installation height	1,8 – 2,5 m
Remote controlled	–
Ambient temperature	-25 °C ... +45 °C
Protection class	II
Type of protection	IP 55

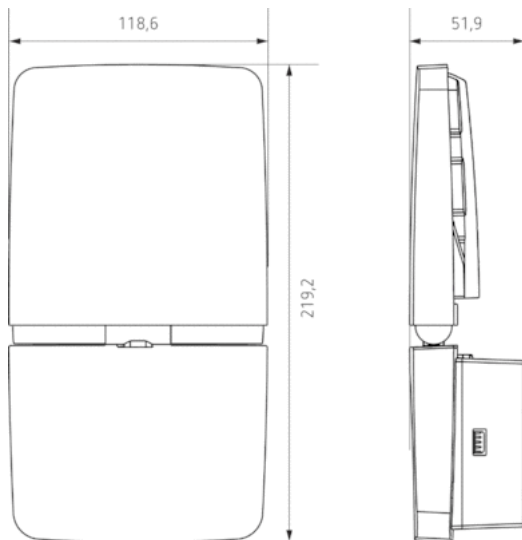
Connection example



Article number: 1020742



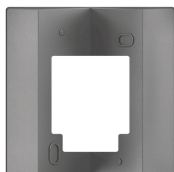
Scale drawings



Accessories

Corner angle 10 AL

- Article number: 9070970
Details ▶ www.theben.de



Spacer 10 AL

- Article number: 9070972
Details ▶ www.theben.de

