

Motion detector - Professional Line

sensIQ S

EVO Anthracite

EAN 4007841 056650

Article number 056650



infrared sensor 3 x
100°



3 zones scalable
2-20m

2000 W

2000 W max.
(LED-ready)



IP54



2 - 2000 lux
daylight operation



5 sec - 15 min



ideal 2 - 5 m

Teach

Teach mode



energy saving

5 years

manufacturer's
warranty
[steinel-professional.de/garantie](https://www.steinel.de/garantie)

Function description

The evolution of perfection. The sensIQ S is just as perfect as its larger role model. For indoors and outdoors, ideal for building entrances, loading bays, for mounting heights of up to 5 m, quadruple sensor system for optimum surveillance over 3x100° coverage angle, 20 m reach (tangential), reach setting to the accuracy of a metre in 3 independent directions. Remote control and corner wall mount bracket included.

sensIQ S

EVO Anthracite
 EAN 4007841 056650
 Article number 056650



Technical specifications

Type	Motion detectors
Type of accessory	Corner adapter
Dimensions (L x W x H)	128 x 114 x 74 mm
Mains power supply	100 – 240 V / 50 – 60 Hz
Power supply, detail	500 VA max., 120 V
Sensor Technology	passive infrared
Application, place	Indoors, Outdoors
Installation site	wall, corner
Installation	Surface wiring
Mounting height	2,00 – 5,00 m
Reach, radial	r = 4 m (42 m ²)
Reach, tangential	r = 20 m (1047 m ²)
Reach, detail	Reach adjustable from 2 - 20 m in 3 directions (100° in each)
Detection angle	300 °
Angle of aperture	180 °
Switching zones	1360 switching zones
Optimum mounting height	2 m
Mechanical scalability	Yes
Sneak-by guard	Yes
Capability of masking out individual segments	Yes
Electronic scalability	No
Twilight setting TEACH	Yes
Twilight setting	2 – 1000 lx
Time setting	5 s – 15 Min.
Output	2000 W
Switching output 1, resistive	2000 W

Fluorescent lamps, electronic ballast	1500 W
Fluorescent lamps, uncorrected	1000 VA
Fluorescent lamps, series-corrected	700 VA
Fluorescent lamps, parallel-corrected	1000 VA
Switching output 1, low-voltage halogen lamps	1000 VA
LED lamps	100 W
LED lamps > 2 W	300 W
LED lamps > 8 W	600 W
Capacitive load in µF	176 µF
Constant-lighting control	No
Basic light level function	No
Functions	Normal / test mode, Manual ON / ON-OFF
Settings via	Remote control, Potentiometers, Smart Remote
With remote control	Yes
Interconnection	Yes
Type of interconnection	Master/master
IP-rating	IP54
Material	Plastic
Ambient temperature	-20 – 50 °C
Application, room	multi-storey / underground car park, outdoors, warehouse, front door, all round the building, courtyard & driveway, Indoors
Colour	Anthracite
Colour, RAL	7016
IDs, certificates	VDE
Manufacturer's Warranty	5 years
Version	Anthracite
PU1, EAN	4007841056650

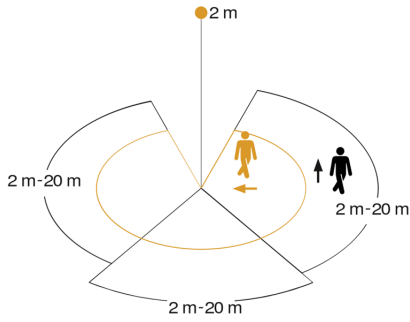
Accessories

EAN 4007841 007638	Remote control RC9
EAN 4007841 009151	Remote control Smart Remote

sensIQ S

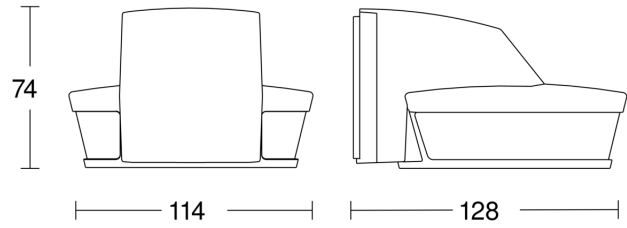
EVO Anthracite
 EAN 4007841 056650
 Article number 056650

Detection Zone

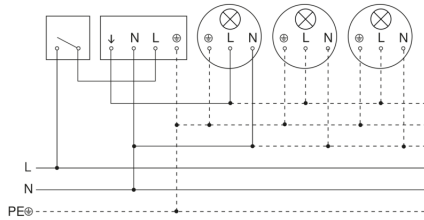


Mögliche Montagehöhe: 2,00 m – 5,00 m
 Orange: radial
 Schwarz: tangential
 3 skallerbare Zonen

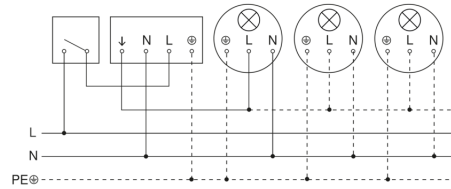
Dimension Drawing



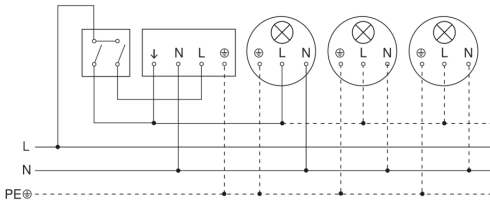
Light without neutral conductor



Light with neutral conductor



Connection using two-circuit switch for manual and automatic operation



Connection via a two-way switch for manual override and automatic operation

