

HF-Matchbox Blue

HF-M BLUE 109 LH TL/PL-S 230-240V

HF-Matchbox Blue is an affordable, reliable, compact, lightweight and high-frequency ballast for use with system wattages below 25 W in combination with TL mini, TL-D, TL5 and TL5c, PL-T/C, and PL-L/S lamps. The HF-M Blue range has a robust design, meets all relevant international safety and performance standards and has an energy efficiency index (CELMA EEI) of A2.

Product data

General Information	
Lamp Type	TL/PL-S
Number Of Lamps	1 piece/unit
Number Of Products On MCB (16A Type B) (Nom)	159
Automatic Restart	Yes
Operating and Electrical	
Input Voltage	230 to 240 V
Input Frequency	50 to 60 Hz
Power Factor 100% Load (Nom)	0.64
Ignition Time (Max)	0.5 s
Mains Voltage Performance (AC)	-8%+6%
Mains Voltage Safety (AC)	-10%+10%
Power Losses (Nom)	1.7 W
Wiring	
Connector Type Input Terminals	Insert
Color Input Terminals	Blue
Color Output Terminals	Grey
Connector Type Output Terminals	Insert
Cable Length From Device To Lamp	1.50 m

Cable Length Hot Wiring	0.30 m
Wire Striplength	8.0-9.0 mm
Input Terminal Cross Section	0.50-1.50 mm ²
Output Terminal Cross Section	0.50-1.50 mm ²

System characteristics	
Rated Ballast-Lamp Power	9 W
System Power On PL-S	9.5 W
Rated Lamp Power On PL-S	9 W
Power Loss On PL-S	1.7 W
Lamp Power On PL-S	7.8 W
Lamp Power On TL	8.2 W
Rated Lamp Power On TL	9 W
System Power On TL	10.1 W

Temperature	
T-Ambient (Max)	40 °C
T-Ambient (Min)	-10 °C
T-Case Maximum (Max)	75 °C

HF-Matchbox Blue

Mechanical and Housing

Housing LH

Emergency Operation

Battery Voltage Lamp Ignition 194-254 V

Approval and Application

Approval Marks F-Marking CE marking VDE certificate CB Certificate

Product Data

Full product code 871150053680830

Order product name HF-M BLUE 109 LH TL/PL-S 230-240V

EAN/UPC - Product 8711500536808

Order code 913700421366

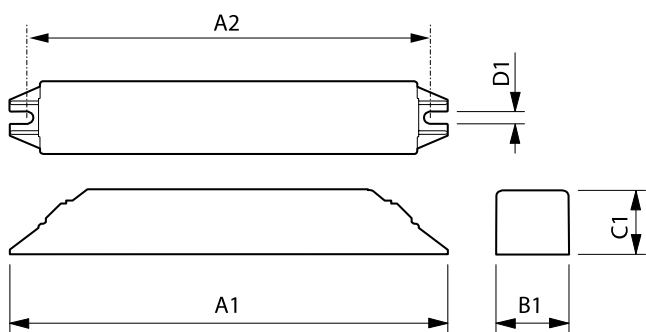
Numerator - Quantity Per Pack 1

Numerator - Packs per outer box 50

Material Nr. (12NC) 913700421366

Net Weight (Piece) 0.036 kg

Dimensional drawing



HF-M BLUE 109 LH TL/PL-S 230-240V

Product	A1	A2	B1	C1	D1
HF-M BLUE 109 LH TL/PL-S 230-240V	144 mm	133 mm	22 mm	22 mm	4.2 mm

