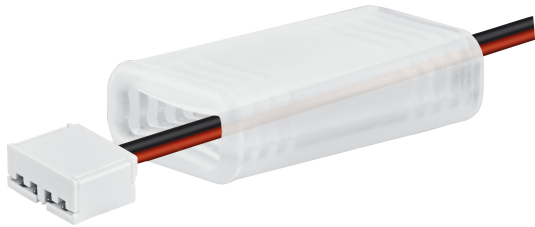


PRODUCT DATASHEET FX -SC08-G2-C2PF-IP54-0500

VALUE Flex IP00 Connection system | – Accessories



Product benefits

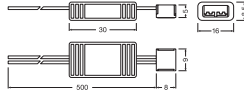
- Simple installation, no tools or soldering required (CONNECTsystem)
- Reduced installation time (CONNECTsystem)
- Can be connected to the front of the module or at division points (CONNECTsystem)
- Low profile (CONNECTsystem)

Product features

- Quick and easy installation
- Compatible with Linearlight Flex
- Compatible with TEC Flex


TECHNICAL DATA

Dimensions & Weight



Length	510 mm
Width	15.7 mm
Height	8.2 mm
Product weight	8.3 g

DOWNLOAD DATA

DOWNLOAD DATA	
	Advertisements

LOGISTICAL DATA

Product code	Packaging unit (Pieces/Unit)	Dimensions (length x width x height)	Gross weight	Volume
4052899464902	Shipping box 280	510 mm x 340 mm x 315 mm	5077.00 g	54.62 dm ³

The mentioned product code describes the smallest quantity unit which can be ordered. One shipping unit can contain one or more single products. When placing an order, for the quantity please enter single or multiples of a shipping unit.

DISCLAIMER

Subject to change without notice. Errors and omission excepted. Always make sure to use the most recent release.