

## DALI CW-WW LED Dimmer CC

### Datasheet Control Gear



DALI LED Dimmer (CC, DT8) for  
the control of tunable white  
luminaires (CW-WW)

common plus connector:

Art. Nr. 86458911-350 (350mA)

Art.Nr. 86458911-350DE (350mA)

Art. Nr. 86458911-500 (500mA)

Art. Nr. 86458911-500DE (500mA)

Art. Nr. 86458911-700 (700mA)

Art. Nr. 86458911-1000 (1000mA)

common minus connector:

Art.Nr. 86458911-350GMDE (350mA)

Art.Nr. 86458911-500GMDE (500mA)

Art. Nr. 86458911-700GM (700mA)

Art. Nr. 86458911-1000GM (1000mA)

# DALI CW-WW LED-Dimmer CC Control Gear

## Overview

- DALI LED-Dimmer for the control of tunable white luminaires
- suitable for constant current LED-modules
- **Operating Mode DT8:** one DALI-address for the independent control of light level and colour temperature (DALI DT8, Colour Type Tc)
- **Operating Mode Balance&Dim:** control by 2 DALI-addresses, one for adjusting the light level and one for adjusting the channel balance (e.g. colour temperature)
- **Operating Mode Dim2Warm:** one DALI-address for simultaneous adjustment of light level and colour temperature
- **SwitchDim2:** 2 switch-inputs offer control of level and colour without DALI
- dimming range 0.1%-100%
- adjustable PWM-frequency (122Hz/244Hz/488Hz/976Hz)
- types for constant currents of 350mA, 500mA, 700mA and 1000mA
- types with common plus and common minus connector available
- compact types for integration in luminaires or remote ceiling
- supply voltage from 12V to 48V DC
- output voltage up to 45VDC
- integrated short circuit protection
- low standby power consumption
- high efficiency
- configuration via PC-software DALI-Cockpit and DALI USB-interface
- user-friendly factory default settings

## Specification, Characteristics

common plus connector:

| type           | DALI CW-WW<br>350/500mA        | DALI CW-WW<br>350/500mA DE | DALI CW-WW<br>700mA | DALI CW-WW<br>1000mA |
|----------------|--------------------------------|----------------------------|---------------------|----------------------|
| article number | 86458911-350 /<br>86458911-500 | 86458911-<br>350DE/500DE   | 86458911-700        | 86458911-1000        |

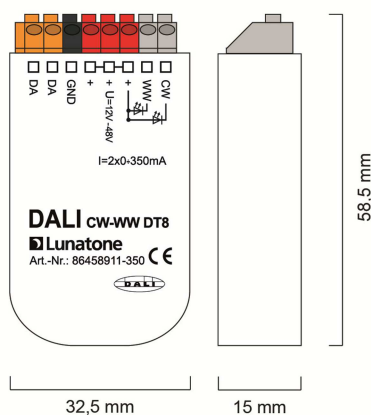
### electrical data:

|                                 |  |                    |       |        |
|---------------------------------|--|--------------------|-------|--------|
| supply voltage $V_{in}$         | 12VDC-48VDC  |                    |       |        |
| max. input current $I_{inmax}$  | 350mA / 500mA  | 350mA / 500mA      | 700mA | 1000mA |
| max. output current $I_{led}$   | 350mA / 500mA  | 350mA / 500mA      | 700mA | 1000mA |
| output voltage range $V_{led}$  | 3V-45V (at 48V supply)   |                    |       |        |
| control input                   | DALI   | DALI<br>SwitchDim2 |       |        |
| current consumption DALI        | 2mA  |                    |       |        |
| number of DALI-addresses        | operating mode DT8, Dim2Warm: 1<br>operating mode Balance&Dim: 2 |                    |       |        |
| standby power consumption (12V) | ~ 180 mW   |                    |       |        |

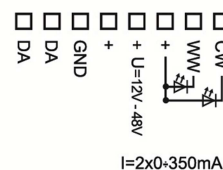
| type                                   | DALI CW-WW<br>350/500mA                      | DALI CW-WW<br>350/500mA DE  | DALI CW-WW<br>700mA | DALI CW-WW<br>1000mA |
|--|--|---|---------------------|----------------------|
| <b>technical data:</b>                 |  |   |                     |                      |
| power on behaviour                     | configurable via DALI: 0%-100% or last value |   |                     |                      |
| storage and transportation temperature | -20°C to +75°C                               |   |                     |                      |
| operational ambient temperature        | -20°C to +60°C                               |   |                     |                      |
| expected lifetime                      | >100000h at Tc<75°C                          |   |                     |                      |
| protection class                       | IP20   |   |                     |                      |
| max. connecting wire cross section     | up to 1.5 mm <sup>2</sup>                    | up to 1.5 mm <sup>2</sup> ,<br>supply (V+, V-): up to 2.5 mm <sup>2</sup> |                     |                      |
| dimensions (LxWxH)                     | 59mm x 33mm<br>x 15mm                        | 120mm x 30mm<br>x 22mm  | 120mm x 41mm x 22mm |                      |
| housing/mounting                       | back box                                     | remote ceiling  |                     |                      |

on request: output currents from 100mA to 1000mA available

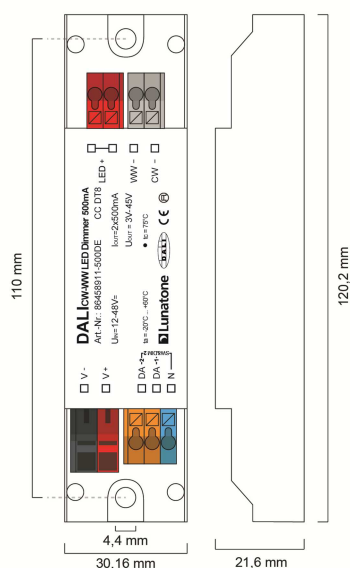
for constant currents up to 500mA:



dimensions (common plus, back box)



connection plan (common plus, back box)

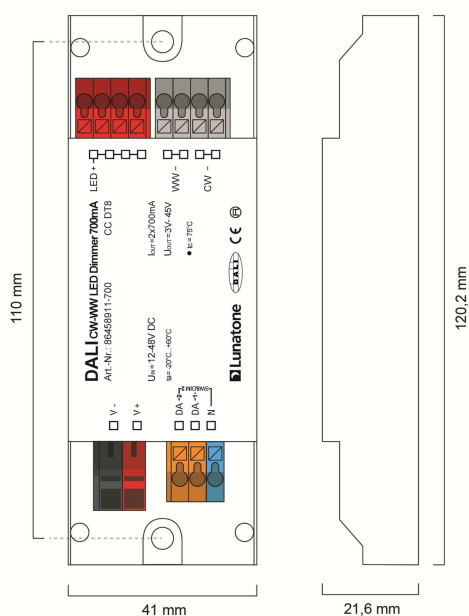


dimensions (common plus, remote ceiling)

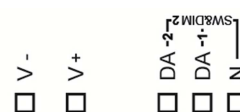
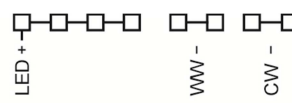


connection plan (common plus, remote ceiling)

for constant currents >500mA



dimensions (common plus, remote ceiling)



connection plan (common plus, remote ceiling)

**common minus connector:**

| type           | DALI CW-WW<br>350/500mA GMDE | DALI CW-WW<br>700mA GM | DALI CW-WW<br>1000mA GM |
|----------------|------------------------------|------------------------|-------------------------|
| article number | 86458911-<br>350GMDE/500GMDE | 86458911-700GM         | 86458911-1000GM         |

**electrical data:**

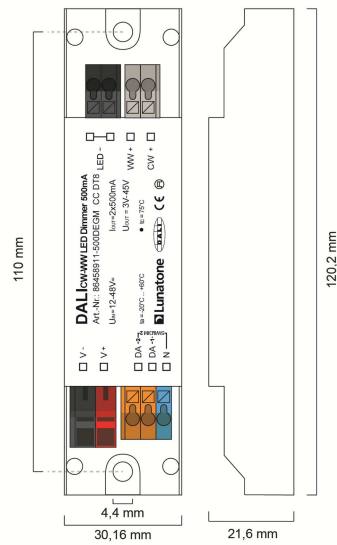
|                                 |  |       |        |
|---------------------------------|--|-------|--------|
| supply voltage $V_{in}$         | 12VDC-48VDC  |       |        |
| max. input current $I_{inmax}$  | 350/500mA  | 700mA | 1000mA |
| max. output current $I_{led}$   | 350/500mA  | 700mA | 1000mA |
| output voltage range $V_{led}$  | 3V-45V (at 48V supply)   |       |        |
| control input                   | DALI<br>SwitchDim2   |       |        |
| current consumption DALI        | 2mA  |       |        |
| number of DALI-addresses        | operating mode DT8, Dim2Warm: 1<br>operating mode Balance&Dim: 2 |       |        |
| standby power consumption (12V) | 180 mW   |       |        |

**technical data:**

|                                    |   |                 |  |
|------------------------------------|---|-----------------|--|
| power on behaviour                 | configurable via DALI: 0%-100% or last value                              |                 |  |
| storage and transportation temp.   | -20°C bis +75°C   |                 |  |
| operational ambient temperature    | -20°C bis +60°C   |                 |  |
| expected lifetime                  | >100000h (at $T_c < 75^\circ\text{C}$ )                                   |                 |  |
| protection class                   | IP20  |                 |  |
| max. connecting wire cross section | up to 1.5 mm <sup>2</sup> ,<br>supply (V+, V-): up to 2.5 mm <sup>2</sup> |                 |  |
| dimensions (LxWxH)                 | 120mmx30mmx22mm   | 120mmx41mmx22mm |  |
| housing/mounting                   | remote ceiling  |                 |  |

on request: output currents from 100mA to 1400mA available

for constant currents up to 500mA (on request up to 700mA):

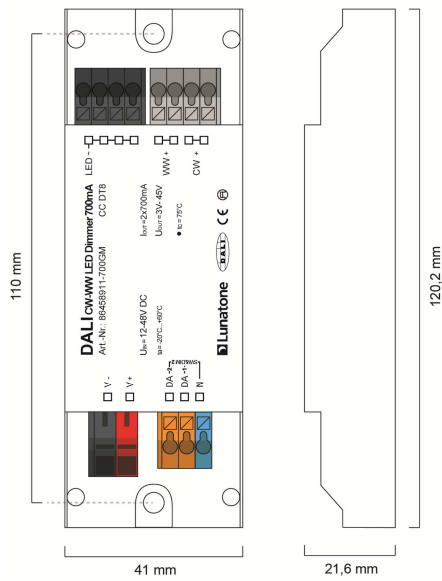


dimensions (common minus, remote ceiling)

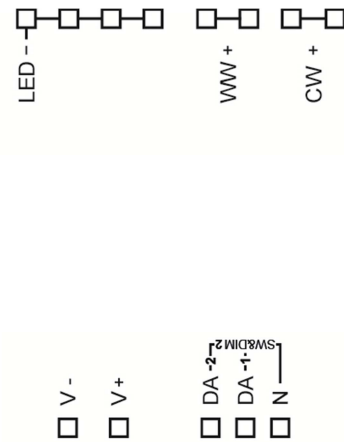


connection plan

for constant currents > 500mA:



dimensions (common minus, remote ceiling)



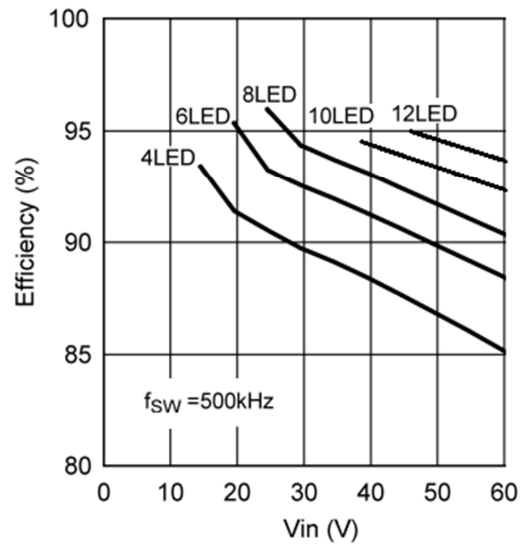
connection plan



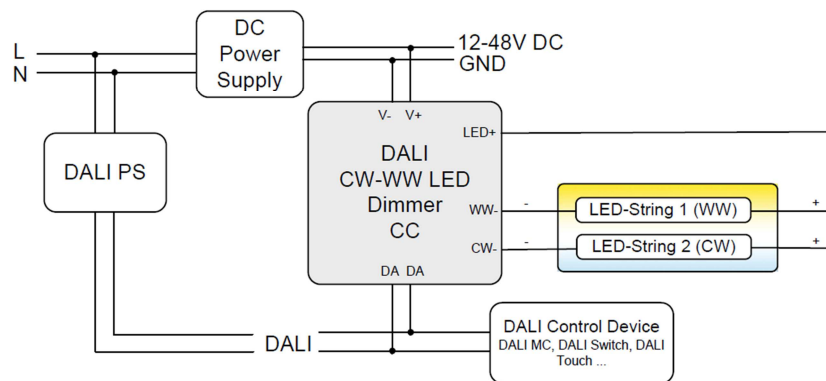
**Hint:**

For highest efficiency the input voltage should range between 3V and 10V above the LED-voltage:

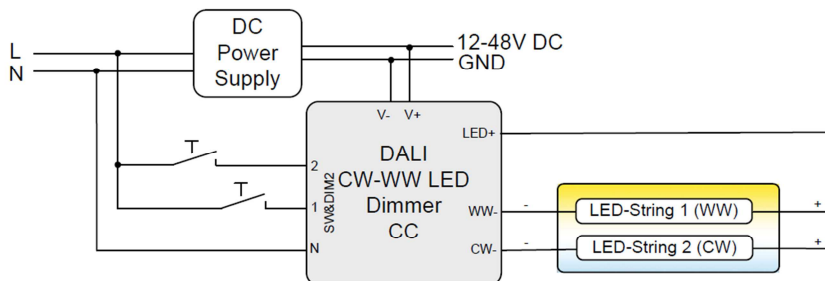
- 4-6 LEDs: 24V
- 6-9LEDs: 36V
- 10-12 LEDs: 48V



DALI (common plus connector type):



SwitchDim2 (common plus connector type):



## Operating Modes

The device offers several operating modes:

### DT8 (factory default)

Default when connected to DALI in this operating mode one DALI-address for the independent control of light level and colour temperature is used (Device Type 8 Mode Tc).

Alternatively the device can be controlled using 2 switch-inputs for mains voltage (SwitchDim2):

SwD1: light level

short press: On/Off

long press: dimming

SwD2: colour temperature

long press: change colour temperature

### Balance&Dim

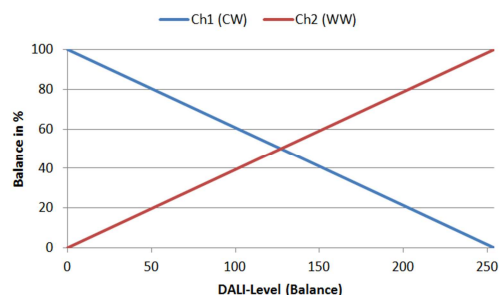
This operating mode is also suitable for operating tunable white luminaires using two DALI-addresses. The first controls the light level and the second is used for changing the distribution on the output channels (e.g. for tunable white applications or balancing direct/indirect lighting).

The Balance&Dim mode allows colour temperature adjustments without affecting the light level and vice versa. For each channel only DALI-standard commands like dim up/down but also DAP are used. Thus the device can be used with all common controls and gateways (e.g. KNX). The Balance&Dim mode provides an alternative to the DT8-Tc mode.

Can be operated via DALI or SwitchDim2:

DALI-address 1, SwD1: light level

DALI-address 2, SwD2: balance



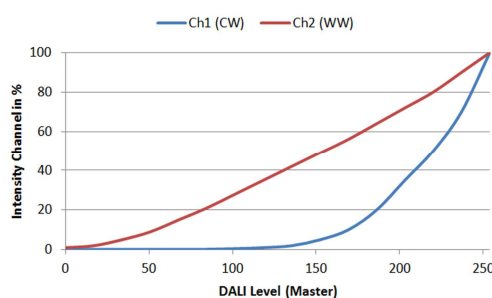
### Dim2Warm

Both output channels are controlled by one DALI-address or SwD-input. The balance is coupled directly to the DALI dim level – the smaller the dim level the warmer the light.

DALI-address 1, SwD1: Dim2Warm (Master)

short press: On/Off

long press: dimming

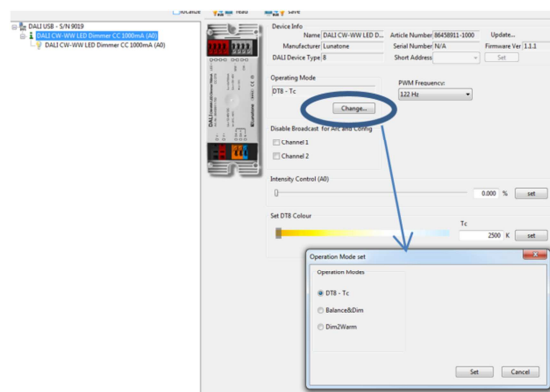


SwD2: scene selector

### Selection of operating mode

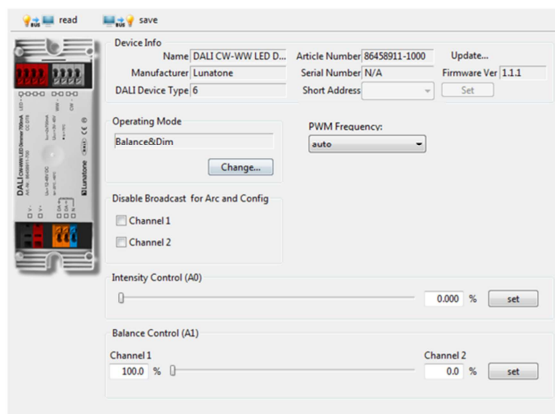
With the help of the PC-software tool DALI-Cockpit the operating mode can be easily set on the general settings page.

Operating mode DT8-Tc:

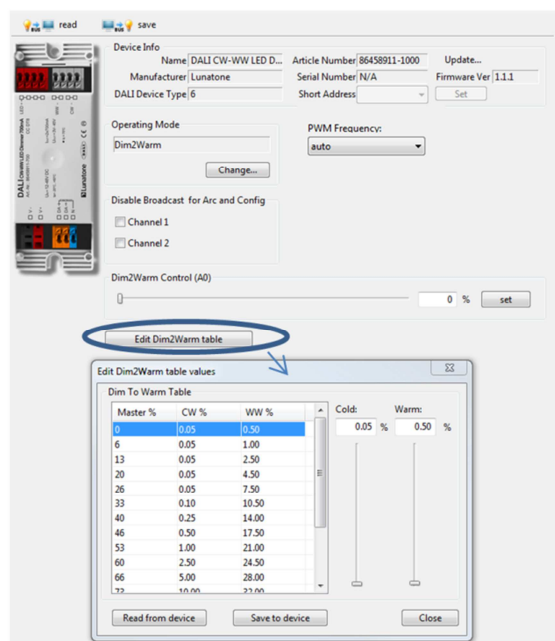


In addition, on the same page the PWM-frequency can be selected and basic control elements for testing each operating modes are available (DT8: slider for level and colour temperature, Balance&Dim: slider for level and balance, Dim2Warm: slider for input value adaption and Edit-Function for the Dim2Warm-table). Furthermore the broadcast control can be deactivated for each channel individually.

Operating Mode Balance&Dim:



Operating Mode Dim2Warm:



Switching between operating modes can also be done with the help of the DALI-command SET OPERATING MODE (IEC 62386-102 Ed.2). When changing the operating mode the number of used DALI-addresses can change as

well and this requires a new addressing procedure. In the DALI-Cockpit this address assignment is performed automatically.

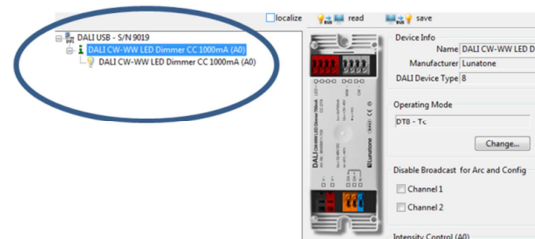
Operating Mode:

| Number | Operating Mode        |
|--------|-----------------------|
| 0x0    | DT8 (factory default) |
| 0x92   | DT8                   |
| 0x94   | Balance&Dim           |
| 0x95   | Dim2Warm              |

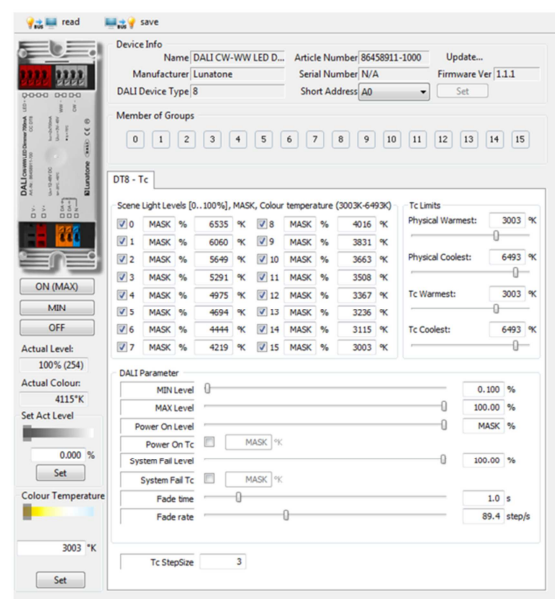
Additional Settings

Besides the settings on the general page each channel can be selected separately in the component tree for individual configuration.

Component Tree:



Settings in the operating mode DT8-Tc (displayed parameters are the factory default values):

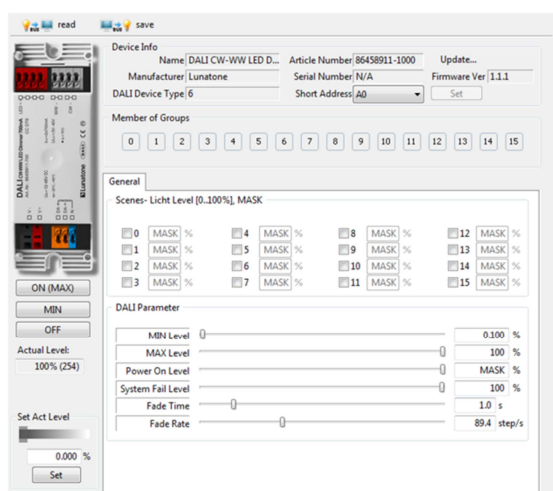




Beside the DT8 Tc standard settings, the Tc stepsize can be increased, this is a simple way to speed up colour temperature changes when using the commands TC STEP COOLER/WARMER.

In all other operating modes (Balance&Dim /Dim2Warm) the following settings are provided.

Operating mode Balance&Dim; Dim2Warm:



For each address the group membership can be set as well as scene values and DALI-parameters. In Balance&Dim operating mode all values assigned to channel 2 are representing the balance.

## Factory Default Settings

Before the initial addressing is performed, the device can already be controlled by a group address. This predefined grouping will be deleted during the first addressing procedure. Afterwards groups can be assigned as usual (e.g. with the help of the DALI Cockpit). By sending a DALI-Reset command the device is set to the default values defined in the standard.

Summary of the factory default settings (delivery state):

|                                     |   |                                     |      |        |                                     |    |                                     |      |        |      |    |                                     |   |        |      |    |                                     |   |        |      |    |                                     |   |        |      |    |                                     |    |        |      |    |                                     |   |        |      |    |                                     |    |        |      |    |                                     |   |        |      |    |                                     |    |        |      |    |                                     |   |        |      |    |                                     |    |        |      |    |                                     |   |        |      |    |                                     |    |        |      |    |                                     |   |        |      |    |                                     |    |        |      |    |
|-------------------------------------|---|-------------------------------------|------|--------|-------------------------------------|----|-------------------------------------|------|--------|------|----|-------------------------------------|---|--------|------|----|-------------------------------------|---|--------|------|----|-------------------------------------|---|--------|------|----|-------------------------------------|----|--------|------|----|-------------------------------------|---|--------|------|----|-------------------------------------|----|--------|------|----|-------------------------------------|---|--------|------|----|-------------------------------------|----|--------|------|----|-------------------------------------|---|--------|------|----|-------------------------------------|----|--------|------|----|-------------------------------------|---|--------|------|----|-------------------------------------|----|--------|------|----|-------------------------------------|---|--------|------|----|-------------------------------------|----|--------|------|----|
| operating mode                      | DT8   |                                     |      |        |                                     |    |                                     |      |        |      |    |                                     |   |        |      |    |                                     |   |        |      |    |                                     |   |        |      |    |                                     |    |        |      |    |                                     |   |        |      |    |                                     |    |        |      |    |                                     |   |        |      |    |                                     |    |        |      |    |                                     |   |        |      |    |                                     |    |        |      |    |                                     |   |        |      |    |                                     |    |        |      |    |                                     |   |        |      |    |                                     |    |        |      |    |
| SwitchDim2                          | SwD1: level<br>SwD2: colour temperature   |                                     |      |        |                                     |    |                                     |      |        |      |    |                                     |   |        |      |    |                                     |   |        |      |    |                                     |   |        |      |    |                                     |    |        |      |    |                                     |   |        |      |    |                                     |    |        |      |    |                                     |   |        |      |    |                                     |    |        |      |    |                                     |   |        |      |    |                                     |    |        |      |    |                                     |   |        |      |    |                                     |    |        |      |    |                                     |   |        |      |    |                                     |    |        |      |    |
| Min Level                           | 0.1%  |                                     |      |        |                                     |    |                                     |      |        |      |    |                                     |   |        |      |    |                                     |   |        |      |    |                                     |   |        |      |    |                                     |    |        |      |    |                                     |   |        |      |    |                                     |    |        |      |    |                                     |   |        |      |    |                                     |    |        |      |    |                                     |   |        |      |    |                                     |    |        |      |    |                                     |   |        |      |    |                                     |    |        |      |    |                                     |   |        |      |    |                                     |    |        |      |    |
| PowerOn Level                       | MASK (last value)   |                                     |      |        |                                     |    |                                     |      |        |      |    |                                     |   |        |      |    |                                     |   |        |      |    |                                     |   |        |      |    |                                     |    |        |      |    |                                     |   |        |      |    |                                     |    |        |      |    |                                     |   |        |      |    |                                     |    |        |      |    |                                     |   |        |      |    |                                     |    |        |      |    |                                     |   |        |      |    |                                     |    |        |      |    |                                     |   |        |      |    |                                     |    |        |      |    |
| Fade Time                           | 2 (1s)  |                                     |      |        |                                     |    |                                     |      |        |      |    |                                     |   |        |      |    |                                     |   |        |      |    |                                     |   |        |      |    |                                     |    |        |      |    |                                     |   |        |      |    |                                     |    |        |      |    |                                     |   |        |      |    |                                     |    |        |      |    |                                     |   |        |      |    |                                     |    |        |      |    |                                     |   |        |      |    |                                     |    |        |      |    |                                     |   |        |      |    |                                     |    |        |      |    |
| Fade Rate                           | 5 (89.4 steps/s)  |                                     |      |        |                                     |    |                                     |      |        |      |    |                                     |   |        |      |    |                                     |   |        |      |    |                                     |   |        |      |    |                                     |    |        |      |    |                                     |   |        |      |    |                                     |    |        |      |    |                                     |   |        |      |    |                                     |    |        |      |    |                                     |   |        |      |    |                                     |    |        |      |    |                                     |   |        |      |    |                                     |    |        |      |    |                                     |   |        |      |    |                                     |    |        |      |    |
| Tc-Stepsize                         | 3 increments  |                                     |      |        |                                     |    |                                     |      |        |      |    |                                     |   |        |      |    |                                     |   |        |      |    |                                     |   |        |      |    |                                     |    |        |      |    |                                     |   |        |      |    |                                     |    |        |      |    |                                     |   |        |      |    |                                     |    |        |      |    |                                     |   |        |      |    |                                     |    |        |      |    |                                     |   |        |      |    |                                     |    |        |      |    |                                     |   |        |      |    |                                     |    |        |      |    |
| PWM-frequency                       | 122Hz   |                                     |      |        |                                     |    |                                     |      |        |      |    |                                     |   |        |      |    |                                     |   |        |      |    |                                     |   |        |      |    |                                     |    |        |      |    |                                     |   |        |      |    |                                     |    |        |      |    |                                     |   |        |      |    |                                     |    |        |      |    |                                     |   |        |      |    |                                     |    |        |      |    |                                     |   |        |      |    |                                     |    |        |      |    |                                     |   |        |      |    |                                     |    |        |      |    |
| Groups before initial addressing:   | G0<br>(or G0 and G1 in operating mode Balance&Dim)  |                                     |      |        |                                     |    |                                     |      |        |      |    |                                     |   |        |      |    |                                     |   |        |      |    |                                     |   |        |      |    |                                     |    |        |      |    |                                     |   |        |      |    |                                     |    |        |      |    |                                     |   |        |      |    |                                     |    |        |      |    |                                     |   |        |      |    |                                     |    |        |      |    |                                     |   |        |      |    |                                     |    |        |      |    |                                     |   |        |      |    |                                     |    |        |      |    |
| Predefined Scene Values:            | <table border="1"> <tr><td><input checked="" type="checkbox"/></td><td>0</td><td>MASK %</td><td>6535</td><td>°K</td><td><input checked="" type="checkbox"/></td><td>8</td><td>MASK %</td><td>4016</td><td>°K</td></tr> <tr><td><input checked="" type="checkbox"/></td><td>1</td><td>MASK %</td><td>6060</td><td>°K</td><td><input checked="" type="checkbox"/></td><td>9</td><td>MASK %</td><td>3831</td><td>°K</td></tr> <tr><td><input checked="" type="checkbox"/></td><td>2</td><td>MASK %</td><td>5649</td><td>°K</td><td><input checked="" type="checkbox"/></td><td>10</td><td>MASK %</td><td>3663</td><td>°K</td></tr> <tr><td><input checked="" type="checkbox"/></td><td>3</td><td>MASK %</td><td>5291</td><td>°K</td><td><input checked="" type="checkbox"/></td><td>11</td><td>MASK %</td><td>3508</td><td>°K</td></tr> <tr><td><input checked="" type="checkbox"/></td><td>4</td><td>MASK %</td><td>4975</td><td>°K</td><td><input checked="" type="checkbox"/></td><td>12</td><td>MASK %</td><td>3367</td><td>°K</td></tr> <tr><td><input checked="" type="checkbox"/></td><td>5</td><td>MASK %</td><td>4694</td><td>°K</td><td><input checked="" type="checkbox"/></td><td>13</td><td>MASK %</td><td>3236</td><td>°K</td></tr> <tr><td><input checked="" type="checkbox"/></td><td>6</td><td>MASK %</td><td>4444</td><td>°K</td><td><input checked="" type="checkbox"/></td><td>14</td><td>MASK %</td><td>3115</td><td>°K</td></tr> <tr><td><input checked="" type="checkbox"/></td><td>7</td><td>MASK %</td><td>4219</td><td>°K</td><td><input checked="" type="checkbox"/></td><td>15</td><td>MASK %</td><td>3003</td><td>°K</td></tr> </table> | <input checked="" type="checkbox"/> | 0    | MASK % | 6535                                | °K | <input checked="" type="checkbox"/> | 8    | MASK % | 4016 | °K | <input checked="" type="checkbox"/> | 1 | MASK % | 6060 | °K | <input checked="" type="checkbox"/> | 9 | MASK % | 3831 | °K | <input checked="" type="checkbox"/> | 2 | MASK % | 5649 | °K | <input checked="" type="checkbox"/> | 10 | MASK % | 3663 | °K | <input checked="" type="checkbox"/> | 3 | MASK % | 5291 | °K | <input checked="" type="checkbox"/> | 11 | MASK % | 3508 | °K | <input checked="" type="checkbox"/> | 4 | MASK % | 4975 | °K | <input checked="" type="checkbox"/> | 12 | MASK % | 3367 | °K | <input checked="" type="checkbox"/> | 5 | MASK % | 4694 | °K | <input checked="" type="checkbox"/> | 13 | MASK % | 3236 | °K | <input checked="" type="checkbox"/> | 6 | MASK % | 4444 | °K | <input checked="" type="checkbox"/> | 14 | MASK % | 3115 | °K | <input checked="" type="checkbox"/> | 7 | MASK % | 4219 | °K | <input checked="" type="checkbox"/> | 15 | MASK % | 3003 | °K |
| <input checked="" type="checkbox"/> | 0   | MASK %                              | 6535 | °K     | <input checked="" type="checkbox"/> | 8  | MASK %                              | 4016 | °K     |      |    |                                     |   |        |      |    |                                     |   |        |      |    |                                     |   |        |      |    |                                     |    |        |      |    |                                     |   |        |      |    |                                     |    |        |      |    |                                     |   |        |      |    |                                     |    |        |      |    |                                     |   |        |      |    |                                     |    |        |      |    |                                     |   |        |      |    |                                     |    |        |      |    |                                     |   |        |      |    |                                     |    |        |      |    |
| <input checked="" type="checkbox"/> | 1   | MASK %                              | 6060 | °K     | <input checked="" type="checkbox"/> | 9  | MASK %                              | 3831 | °K     |      |    |                                     |   |        |      |    |                                     |   |        |      |    |                                     |   |        |      |    |                                     |    |        |      |    |                                     |   |        |      |    |                                     |    |        |      |    |                                     |   |        |      |    |                                     |    |        |      |    |                                     |   |        |      |    |                                     |    |        |      |    |                                     |   |        |      |    |                                     |    |        |      |    |                                     |   |        |      |    |                                     |    |        |      |    |
| <input checked="" type="checkbox"/> | 2   | MASK %                              | 5649 | °K     | <input checked="" type="checkbox"/> | 10 | MASK %                              | 3663 | °K     |      |    |                                     |   |        |      |    |                                     |   |        |      |    |                                     |   |        |      |    |                                     |    |        |      |    |                                     |   |        |      |    |                                     |    |        |      |    |                                     |   |        |      |    |                                     |    |        |      |    |                                     |   |        |      |    |                                     |    |        |      |    |                                     |   |        |      |    |                                     |    |        |      |    |                                     |   |        |      |    |                                     |    |        |      |    |
| <input checked="" type="checkbox"/> | 3   | MASK %                              | 5291 | °K     | <input checked="" type="checkbox"/> | 11 | MASK %                              | 3508 | °K     |      |    |                                     |   |        |      |    |                                     |   |        |      |    |                                     |   |        |      |    |                                     |    |        |      |    |                                     |   |        |      |    |                                     |    |        |      |    |                                     |   |        |      |    |                                     |    |        |      |    |                                     |   |        |      |    |                                     |    |        |      |    |                                     |   |        |      |    |                                     |    |        |      |    |                                     |   |        |      |    |                                     |    |        |      |    |
| <input checked="" type="checkbox"/> | 4   | MASK %                              | 4975 | °K     | <input checked="" type="checkbox"/> | 12 | MASK %                              | 3367 | °K     |      |    |                                     |   |        |      |    |                                     |   |        |      |    |                                     |   |        |      |    |                                     |    |        |      |    |                                     |   |        |      |    |                                     |    |        |      |    |                                     |   |        |      |    |                                     |    |        |      |    |                                     |   |        |      |    |                                     |    |        |      |    |                                     |   |        |      |    |                                     |    |        |      |    |                                     |   |        |      |    |                                     |    |        |      |    |
| <input checked="" type="checkbox"/> | 5   | MASK %                              | 4694 | °K     | <input checked="" type="checkbox"/> | 13 | MASK %                              | 3236 | °K     |      |    |                                     |   |        |      |    |                                     |   |        |      |    |                                     |   |        |      |    |                                     |    |        |      |    |                                     |   |        |      |    |                                     |    |        |      |    |                                     |   |        |      |    |                                     |    |        |      |    |                                     |   |        |      |    |                                     |    |        |      |    |                                     |   |        |      |    |                                     |    |        |      |    |                                     |   |        |      |    |                                     |    |        |      |    |
| <input checked="" type="checkbox"/> | 6   | MASK %                              | 4444 | °K     | <input checked="" type="checkbox"/> | 14 | MASK %                              | 3115 | °K     |      |    |                                     |   |        |      |    |                                     |   |        |      |    |                                     |   |        |      |    |                                     |    |        |      |    |                                     |   |        |      |    |                                     |    |        |      |    |                                     |   |        |      |    |                                     |    |        |      |    |                                     |   |        |      |    |                                     |    |        |      |    |                                     |   |        |      |    |                                     |    |        |      |    |                                     |   |        |      |    |                                     |    |        |      |    |
| <input checked="" type="checkbox"/> | 7   | MASK %                              | 4219 | °K     | <input checked="" type="checkbox"/> | 15 | MASK %                              | 3003 | °K     |      |    |                                     |   |        |      |    |                                     |   |        |      |    |                                     |   |        |      |    |                                     |    |        |      |    |                                     |   |        |      |    |                                     |    |        |      |    |                                     |   |        |      |    |                                     |    |        |      |    |                                     |   |        |      |    |                                     |    |        |      |    |                                     |   |        |      |    |                                     |    |        |      |    |                                     |   |        |      |    |                                     |    |        |      |    |

## Purchase Order Information

**Art.Nr. 86458911-xxx:** DALI CW-WW LED Dimmer, CC – constant current xxxmA, **common plus connector**, supply 12V-48V DC, output voltage range: 3V-45V , 100mA - 500mA, back box

**Art.Nr. 86458911-xxxDE:** DALI CW-WW LED Dimmer, CC – constant current xxxmA, **common plus connector**, supply 12V-48V DC, output voltage range: 3V-45V, **SwitchDim2**, 100mA-500mA, remote ceiling & integration in luminaires

**Art.Nr. 86458911-xxx:** DALI CW-WW LED Dimmer, CC – constant current xxxmA, **common plus connector**, supply 12V-48V DC, output voltage range: 3V-45V, **SwitchDim2**, 500mA -1000mA, remote ceiling & integration in luminaires

**Art.Nr. 86458911-xxxGMDE:** DALI CW-WW LED Dimmer, CC – constant current xxxmA,

**common minus connector**, supply 12V-48V DC, output voltage range: 3V-45V,  
**SwitchDim2**, 100mA-500mA, remote ceiling & integration in luminaires

**Art.Nr. 86458911-xxxGM**: DALI CW-WW LED Dimmer, CC – constant current xxxmA,  
**common minus connector**, supply 12V-48V DC, output voltage range: 3V-45V,  
**SwitchDim2**, 500mA -1400mA, remote ceiling & integration in luminaires

## Additional Information and Equipment

DALI-Cockpit – free configuration tool from Lunatone for DALI systems  
[http://lunatone.at/en/downloads/Lunatone\\_DALI-Cockpit.zip](http://lunatone.at/en/downloads/Lunatone_DALI-Cockpit.zip)

Lunatone DALI products  
<http://www.lunatone.at/en/>

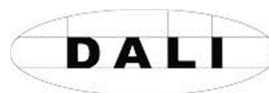
Lunatone datasheets and manuals  
<http://lunatone.at/en/downloads/>

## Contact

Technical Support: [support@lunatone.com](mailto:support@lunatone.com)

Requests: [sales@lunatone.com](mailto:sales@lunatone.com)

[www.lunatone.com](http://www.lunatone.com)



## Disclaimer

Subject to change. Information provided without guarantee.  
The datasheet refers to the current delivery.

The compatibility with other devices must be tested in advance to the installation.