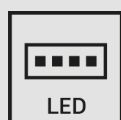


WATEX

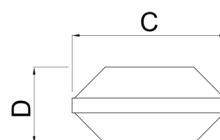
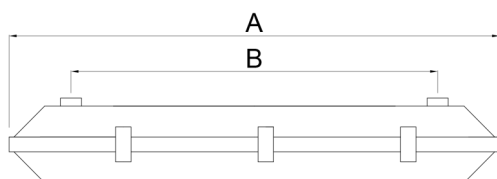


APLICACIONES INDICADAS / SUITABLE APPLICATIONS / APPLICATIONS APPROPRIÉES



Apta para zonas ATEX: 2/21,22
Suitable for ATEX zones 2/21,22
Convient aux zones ATEX: 2/21, 22

Ta = -20— 45°C

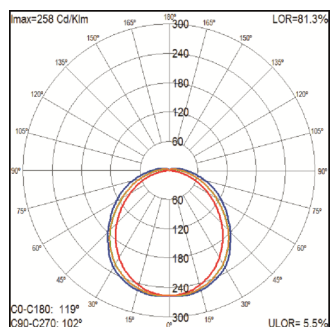




RG0	MACADAM 3/4	UGR <19	CR>80	L70B50 > 50.000	IK08	IP66	2014/34/EU II 3G2D Ex ec IIC T6 Gc Ex tb IIIC 85°C Db
-----	----------------	------------	-------	-----------------------	------	------	--



1 MÓDULO LED / 1 LED MODULE / 1 MODULE LED



Ref.	Tamaño Size Dimension	Potencia Power Puissance	Emisión bruta Gross output Flux de la source	Emisión Neta Net output Flux sortant	Tª color Tª colour Tª couleur	A	B	C	D
		(W)	(Lm)	(Lm)	(°K)	(mm)	(mm)	(mm)	(mm)
EW113C	600	13	1.490	1.210	3.000	664	260	100	110
EW114C	600	13	1.550	1.259	4.000	664	260	100	110
EW123C	600	16	2.560	2.019	3.000	664	260	100	110
EW124C	600	16	2.670	2.168	4.000	664	260	100	110
EW213C	1.200	24	2.980	2.420	3.000	1.274	870	100	110
EW214C	1.200	24	3.200	2.598	4.000	1.274	870	100	110
EW223C	1.200	32	5.120	4.157	3.000	1.274	870	100	110
EW224C	1.200	32	5.340	4.336	4.000	1.274	870	100	110
EW313C	1.500	29	3.720	3.021	3.000	1.575	650	100	110
EW314C	1.500	29	4.000	3.248	4.000	1.575	650	100	110
EW323C	1.500	40	6.310	5.124	3.000	1.575	650	100	110
EW324C	1.500	40	6.700	5.440	4.000	1.575	650	100	110

Entrada cable alimentación: Prensaestopas ATEX M20 para cable armado.
 Power cable entry: M20 ATEX cable gland for armored cable. Silicone gasket.
 Entrée de câble d'alimentation : presse-étoupe M20 pour câble armé.



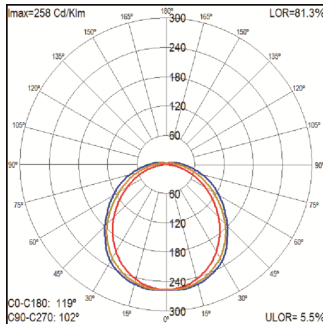
Junta de cierre: Silicona.
Closing gasket: silicone.
Joint: Silicone.

Clips cierre acero inoxidable.
Stainless Steel closing clips.
Pièces de fermeture en acier inoxydable

WATEX



2 MÓDULOS LED / 2 LED MODULES / 2 MODULES LED



Ref.	Tamaño Size Dimension	Potencia Power Puissance	Emisión bruta Gross output Flux de la source	Emisión Neta Net output Flux sortant	Tª color Tª colour Tª couleur	A	B	C	D
		(W)	(Lm)	(Lm)	(°K)	(mm)	(mm)	(mm)	(mm)
EY113C	600	24	2.980	2.420	3.000	664	260	160	110
EY114C	600	24	3.200	2.598	4.000	664	260	160	110
EY123C	600	32	5.120	4.157	3.000	664	260	160	110
EY124C	600	32	5.340	4.336	4.000	664	260	160	110
EY213C	1.200	48	5.960	4.840	3.000	1.274	870	160	110
EY214C	1.200	48	6.400	5.197	4.000	1.274	870	160	110
EY223C	1.200	64	10.240	8.315	3.000	1.274	870	160	110
EY224C	1.200	64	10.680	8.672	4.000	1.274	870	160	110
EY313C	1.500	58	7.440	6.041	3.000	1.575	650	160	110
EY314C	1.500	58	8.000	6.496	4.000	1.575	650	160	110
EY323C	1.500	80	12.620	10.247	3.000	1.575	650	160	110
EY324C	1.500	80	13.400	10.881	4.000	1.575	650	160	110

ACCESORIOS WATEX / WATEX ACCESSORIES / ACCESSOIRES WATEX

DALI	EMERGENCY 1h/3h
------	--------------------

Ref. **Q0978**
Sujeción a báculo
 Pole adapter
 Adaptateur de lampadaire



Ref.	Q0974	Q0975	Q0976
	Suplemento conexión 5 polos	Suplemento Línea Continua 3 polos	Suplemento Línea Continua 5 polos
	5 poles terminal block option	Trough wiring 3 poles	Trough wiring 5 poles
	Possibilité de connexion à 5 pôles	3-pole Continuous Line supplement	5-pole Continuous Line supplement

