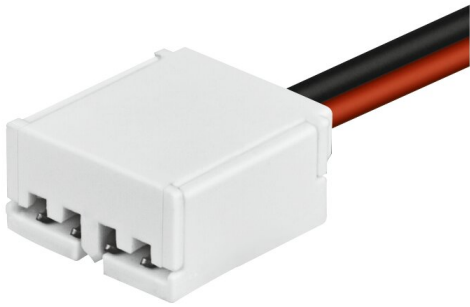


PRODUCT DATASHEET FX -SC08-G2-CT2PF-1000

LINEARlight FLEX® Tunable White | – Flex accessories



Product benefits

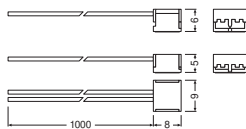
- Simple installation, no tools or soldering required (CONNECTsystem)
- Reduced installation time (CONNECTsystem)
- Low profile
- Extremely vibration-proof (CONNECTsystem)
- Robust connection
- Can be connected to the front of the module or at division points (CONNECTsystem)

Product features

- Quick and easy installation
- Compatible with Linearlight Flex
- Compatible with TEC Flex

TECHNICAL DATA

Dimensions & Weight



| | |
|----------------|---------|
| Length | 1010 mm |
| Width | 9.2 mm |
| Height | 5.9 mm |
| Product weight | 9.8 g |

DOWNLOAD DATA

DOWNLOAD DATA

[PRODUCT DATASHEET](#)[Advertisements](#)

LOGISTICAL DATA

| Product code | Packaging unit (Pieces/Unit) | Dimensions (length x width x height) | Gross weight | Volume |
|---------------|------------------------------|--------------------------------------|--------------|-----------------------|
| 4052899464780 | Shipping box 280 | 510 mm x 340 mm x 315 mm | 6314.00 g | 54.62 dm ³ |

The mentioned product code describes the smallest quantity unit which can be ordered. One shipping unit can contain one or more single products. When placing an order, for the quantity please enter single or multiples of a shipping unit.

DISCLAIMER

Subject to change without notice. Errors and omission excepted. Always make sure to use the most recent release.