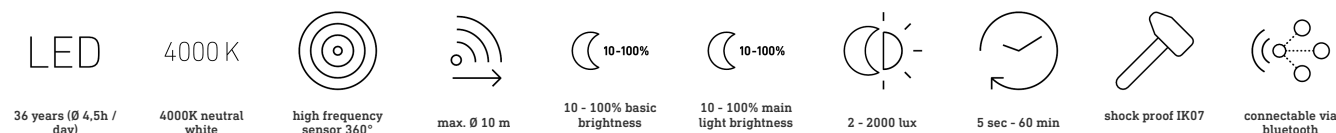
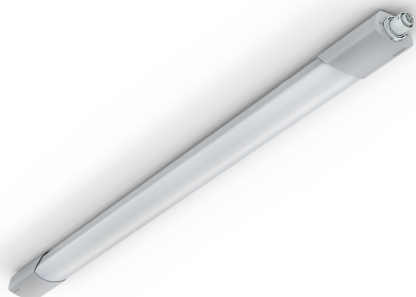


RS PRO 5100 SC 5C

5 Core
 EAN 4007841 079185
 Article number 079185



Function description

New diffuser luminaire. New options. The sensor-switched LED diffuser luminaire is sturdy, practical, easy to install, interconnectable via Bluetooth, conveniently set by smartphone, extremely energy-efficient and no problem whatsoever to service. Ideal for refurbishment in multi-storey car parks, basements, industrial and sports buildings, garages and corridors. 360° high-frequency sensor, 12 m reach. With 4250 lm from 31 W in a colour temperature of 4000 K (neutral white). Presence mode rules out any unintentional deactivation. For a 5-wire installation, we recommend the 5-Core version, which, in contrast to the standard version, enables through-wiring with a 3-phase supply.

Technical specifications

Dimensions (L x W x H)	1370 x 87 x 58 mm
Mains power supply	220 – 240 V / 50 – 60 Hz
Sensor Technology	High frequency
Transmitter power	
Output	31 W
Power consumption	0,41 W
Interconnection	Yes
Lichtstrom Gesamtprodukt	4250 lm
Gesamtprodukt Effizienz	137 lm/W
Colour temperature	4000 K
Colour variation LED	SDCM3
Colour Rendering Index	80-89
Lamp	LED cannot be replaced
LED life expectancy (max. °C)	60000 h
Drop in luminous flux in accordance with LM80	L80B10
LED cooling system	Passive Thermo Control
With motion detector	Yes
Detection angle	360 °
Angle of aperture	160 °

Electronic scalability	Yes
Twilight setting	2 – 2000 lx
Time setting	5 s – 60 Min.
Basic light level function	Yes
Basic light level function time	1-60 min
Main light adjustable	10 - 100 %
Impact resistance	IK07
IP-rating	IP66
Protection class	II
Ambient temperature	-20 – 40 °C
Housing material	Plastic
Cover material	Plastic, structured
Manufacturer's Warranty	5 years
Settings via	Bluetooth
Version	5 Core
Total harmonic distortion (THD)	12,5
Power factor	0,94
Photobiological safety in accordance with EN 62471	RG1
PU1, EAN	4007841079185

Sensor-switched LED indoor light - Professional Line

RS PRO 5100 SC 5C

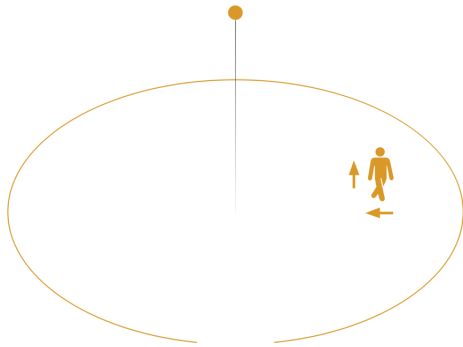
5 Core

EAN 4007841 079185

Article number 079185



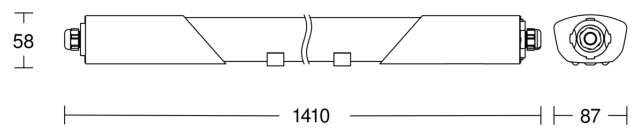
Detection Zone



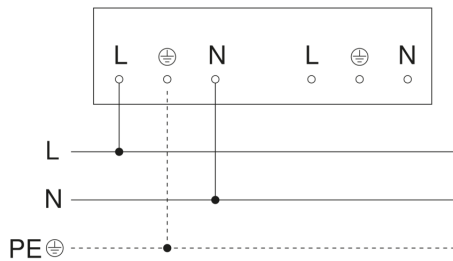
Mögliche Montagehöhe: – 3,50 m

Orange: radial und tangential

Dimension Drawing



Master circuit diagram



RS PRO 5100 SC 5C

5 Core

EAN 4007841 079185

Article number 079185

Master/slave and master/master interconnection circuit diagram

