

HF-Matchbox Red

HF-M RED 114 SH TL/TL5/PL-C/S 230-240V

HF-Matchbox Red is an affordable, reliable, compact, lightweight and high-frequency ballast for use with system wattages below 25 W in combination with TL mini, TL-D, TL5 and TL5c, PL-T/C, and PL-L/S lamps. The HF-M Red range has a robust design, meets all relevant international safety and performance standards and has an energy efficiency index (CELMA EEI) of A2.

Product data

General Information		Wire Striplength	
Lamp Type	TL/TL5/PL-C/S	Wire Striplength	8.0-9.0 mm
Number Of Lamps	1 piece/unit	Input Terminal Cross Section	0.50-1.50 mm ²
Number Of Products On MCB (16A Type B) (Nom)	101	Output Terminal Cross Section	0.50-1.50 mm ²
Automatic Restart	Yes	System characteristics	
Operating and Electrical		Rated Ballast-Lamp Power	14 W
Input Voltage	230 to 240 V	Rated Lamp Power On TL5	14 W
Input Frequency	50 to 60 Hz	System Power On TL5	16 W
Power Factor 100% Load (Nom)	0.64	Lamp Power On TL5	13.1 W
Ignition Time (Max)	1.55 s	Power Loss On TL5	2.9 W
Mains Voltage Performance (AC)	-8%+6%	System Power On PL-C	10.6 W
Mains Voltage Safety (AC)	-10%+10%	Rated Lamp Power On PL-C	14 W
Power Losses (Nom)	2.9 W	Power Loss On PL-C	1.7 W
		Lamp Power On PL-C	8.9 W
Wiring		Temperature	
Connector Type Input Terminals	Insert	T-Ambient (Max)	50 °C
Color Input Terminals	Blue	T-Ambient (Min)	-25 °C
Color Output Terminals	Grey	T-Case Maximum (Max)	80 °C
Connector Type Output Terminals	Insert		
Cable Length Hot Wiring	0.75 m		

HF-Matchbox Red

Mechanical and Housing

Housing SH

Emergency Operation

Battery Voltage Lamp Ignition 190-254 V

Approval and Application

Approval Marks CE marking ENEC certificate

Product Data

Full product code 871150093140530

Order product name HF-M RED 114 SH TL/TL5/PL-C/S
230-240V

EAN/UPC - Product 8711500931405

Order code 913700423266

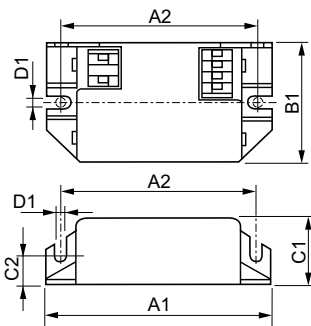
Numerator - Quantity Per Pack 1

Numerator - Packs per outer box 50

Material Nr. (12NC) 913700423266

Net Weight (Piece) 0.034 kg

Dimensional drawing



HF-M RED 114 SH TL/TL5/PL-C/S 230-240V

Product	D1	C1	C2	A1	A2	B1
HF-M RED 114 SH TL/TL5/PL-C/S 230-240V	4.2 mm	22.0 mm	10.0 mm	80.0 mm	70.0 mm	40.0 mm

