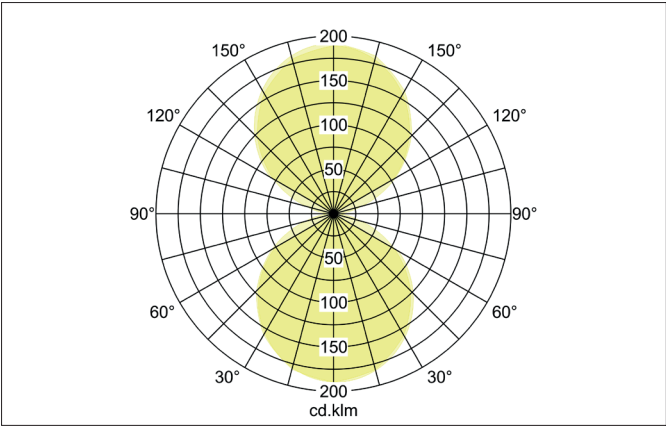
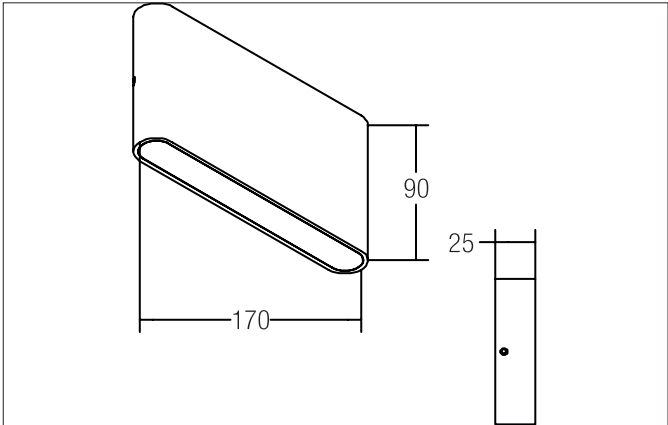


LED wall surface mounted luminaire, IP54  
Artikel-Nr. 10046173

Licht.  
Für Generationen.



**Tender**  
LED wall surface mounted luminaire, IP54, white, other. Surface mounting, Wall-mounted. Direct and indirect light emission. Mounting method: Surface mounting, Place of installation: Wall-mounted, Material: Aluminium / Acrylic, Degree of protection: according to DIN EN 60529 IP54, Protection class: (EN 61140) I, Voltage: 230V AC 50Hz, Power: 10.8W, Amount of light sources / fittings: 2.0 Qty, Luminous flux: 530lm, Colour temperature: 3.000 K, Light colour : White, Beam angle: 120°, With control gear: Yes, Control: on/off.

Article data	
Artikel-Nr.	10046173
GTIN	4250047772491
Kurzbeschreibung	LED wall surface mounted luminaire, IP54
Material	Aluminium
Colour	White
Type of surface	Matt
Shape	other
Length	90 mm
Width	170 mm
Aufbauhöhe	25 mm
scope of delivery	Incl. converter for connection to the 230-V mains voltage
weight	0.605 kg

**LED wall surface mounted luminaire, IP54**

Artikel-Nr. 10046173

Licht.  
Für Generationen.

Lighting technology	
Colour temperature	3000 K
Light colour	White
Light output	Direct/Indirect
Luminous flux	530 lm
System efficiency	49 lm/W
Colour rendering	CRI > 80
Reflector	Without
Beam angle	120 °
Light sharing	Symmetric

Operating technology of the luminaires	
System output	10.8 W
Voltage type	AC
AC nominal voltage max	230 V
Frequenz max.	50 Hz
Lamp	LED
Protection class	I
Degree of protection	IP54
Control	on/off
Leuchtmittelwechsel möglich	ja

Mounting technology	
Mounting method	Surface mounting
Place of installation	Wall-mounted
Adjustability	Not adjustable
Material cover	Glass opal

Packing data	
Gross weight	0.678 kg
Length of packaging	200 mm
Packaging width	100 mm
Packaging height	60 mm