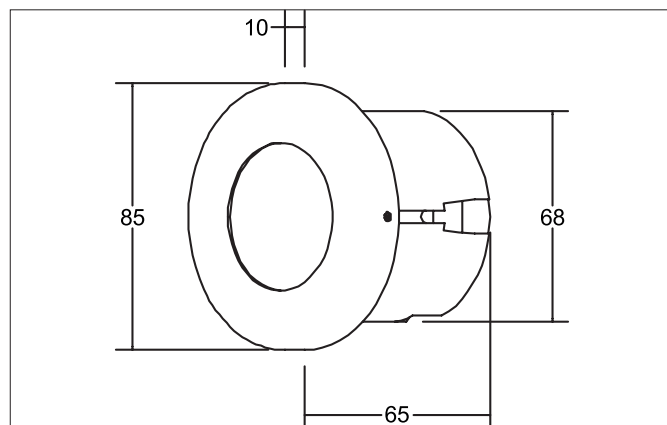


LED wall recessed light

Artikel-Nr. 10141203

Licht.
Für Generationen.**Tender**

LED wall recessed light, stainless steel, round. Recessed mounting, Wall-mounted. Including a converter for connection with the 230-V mains voltage, on/off switchable, and cavity wall mounting box Ø 68 mm / installation depth: 65 mm. Mounting method: Recessed mounting, Place of installation: Wall-mounted, Material: Stainless steel / Acrylic / Plastic, Degree of protection: according to DIN EN 60529 IP20, Protection class: (EN 61140) I, Voltage: 230V AC 50Hz, Power: 1.2W, Amount of light sources / fittings: 1.0 Qty, Luminous flux: 40lm, Colour temperature: 3.000 K, Light colour : White, With control gear: Yes, Control: on/off.

Article data	
Artikel-Nr.	10141203
GTIN	4250047767664
Kurzbeschreibung	LED wall recessed light
Material	Stainless steel
Colour	Stainless steel
Shape	round
Outer diameter	85 mm
Built-in diameter	68 mm
Installation depth	65 mm
weight	0.231 kg

LED wall recessed light

Artikel-Nr. 10141203

Licht.
Für Generationen.

Lighting technology	
Colour temperature	3000 K
Light colour	White
Luminous flux	40 lm
System efficiency	33 lm/W
Colour rendering	CRI > 80
Reflector	Without
Light sharing	Symmetric

Operating technology of the luminaires	
System output	1.2 W
Voltage type	AC
AC nominal voltage max	230 V
Frequenz max.	50 Hz
Lamp	LED
Protection class	I
Degree of protection	IP20
Control	on/off
Leuchtmittelwechsel möglich	ja

Operating technology of driver	
AC nominal voltage max	230 V
Frequenz max.	50 Hz
Protection class	I
Degree of protection	IP20
Control	on/off

Mounting technology	
Mounting method	Recessed mounting
Place of installation	Wall-mounted
Adjustability	Not adjustable
Material cover	Plastic, opal

Packing data	
Gross weight	0.279 kg
Length of packaging	95 mm
Packaging width	75 mm
Packaging height	95 mm