

## Controllable (1-10 V) electronic ballasts for T8 fluorescent lamps

freedom in lighting

18-70 W 220-240 V, 50-60 Hz

- Switch-Control / Analogue control <sup>1)</sup>
- Only 21 mm high
- Standard & sidemount possibilities
- Dimming range 1-100 % <sup>2)</sup>
- Microprocessor controlled
- User friendly, quick release connectors
- Low energy consumption
- Flickerless light



### A1

Lamp type	Wattage	No. of lamps	Ballast	EEI	Dimensions	Connection	Weight	Circuit power	Mains current	Lamp power
						(p.14)	(g)	(W)	(A)	(W)
T8	18	1	EL1x18sc	A1	1	8	270	19	0.09-0.08	16
	18	2	EL2x18sc	A1	2	9	340	37	0.18-0.15	16
	18	4	EL4x18sc <sup>2)</sup>	A1	2	10	340	72	0.33-0.30	16
	36	1	EL1x36sc	A1	1	8	270	37	0.17-0.16	32
	36	2	EL2x36sc	A1	2	9	340	71	0.33-0.30	32
	58	1	EL1x58sc	A1	1	8	270	55	0.27-0.26	50
	58	2	EL2x58sc	A1	2	9	340	108	0.50-0.46	50
	70	1	EL1x70sc	A1	1	8	270	65	0.31-0.27	60

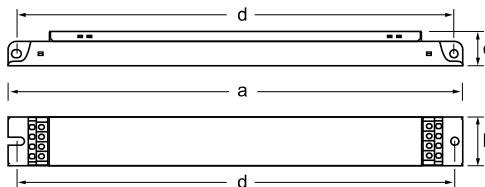
Note: See pages 14-17 for connection diagrams and additional characteristics.

1) Simultaneous lighting control by Switch-Control and Analogue control

2) Dimming range 3-100 % for 4x18sc

For information on compatibility with amalgam lamps, please contact your local Helvar representative.

Dimensions	1	2
Length 'a' (mm)	360	430
Width 'b' (mm)	30	30
Height 'c' (mm)	21	21
'd' (mm)	350	420



Delivery information					
Ballast	Unit package		Transportation package		
	Minimum delivery amount	Plastic binding strip	EUR pallet 1200 x 800 (pcs.)	Pallet weight (kg)	Pallet height (cm)
EL1 x sc	10	●	980	300	40
EL2 x sc	10	●	840	325	43
EL4 x sc	10	●	840	325	43

**Controllable (1-10 V) electronic ballasts** for compact fluorescent lamps *freedom in lighting*

**24-80 W 220-240 V, 50-60 Hz**

- Switch-Control / Analogue control<sup>1)</sup>
- Only 21 mm high
- Standard & sidemount possibilities
- Dimming range 1-100 %
- Microprocessor controlled
- User friendly, quick release connectors
- Low energy consumption
- Flickerless light



**A1**



Lamp type	Wattage	No. of lamps	Ballast	EEL	Dimensions	Connection	Weight	Circuit power	Mains current	Lamp power
<b>TC-L</b>	24	1	EL1x24sc <sup>2)</sup>	A1	1	8	270	26	0.13-0.12	24
	24	2	EL2x24sc <sup>2)</sup>	A1	2	9	340	50	0.24-0.20	24
	36	1	EL1x36sc	A1	1	8	270	37	0.17-0.16	32
	36	2	EL2x36sc	A1	2	9	340	71	0.33-0.30	32
	40	1	EL1x39sc <sup>2)</sup>	A1	1	8	270	44	0.20-0.18	40
	40	2	EL2x39sc <sup>2)</sup>	A1	2	9	340	84	0.40-0.36	40
	55	1	EL1x55sc	A1	1	8	270	61	0.28-0.26	55
	55	2	EL2x55sc	A1	2	9	340	117	0.53-0.49	55
<b>TC-F</b>	80	1	EL1x80sc <sup>2)</sup>	A1	1	8	270	88	0.41-0.38	80
	24	1	EL1x24sc <sup>2)</sup>	A1	1	8	270	26	0.13-0.12	24
	24	2	EL2x24sc <sup>2)</sup>	A1	2	9	340	50	0.24-0.20	24
	36	1	EL1x36sc <sup>2)</sup>	A1	1	8	270	37	0.17-0.16	32
	36	2	EL2x36sc <sup>2)</sup>	A1	2	9	340	71	0.33-0.30	32
<b>T5c</b>	40	1	EL1x39sc <sup>2)</sup>	A1	1	8	270	43	0.20-0.18	40

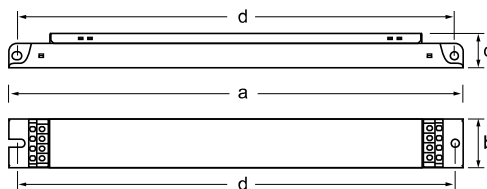
Note: See pages 14-17 for connection diagrams and additional characteristics.

1) Simultaneous lighting control by Switch-Control and Analogue control

2) Tested and recommended by Helvar, not ENEC approved combination

For information on compatibility with amalgam lamps, please contact your local Helvar representative.

Dimensions	1	2
Length 'a' (mm)	360	430
Width 'b' (mm)	30	30
Height 'c' (mm)	21	21
'd' (mm)	350	420



Delivery information					
Ballast	Unit package		Transportation package		
	Minimum delivery amount	Plastic binding strip	EUR pallet 1200 x 800 (pcs.)	Pallet weight (kg)	Pallet height (cm)
EL1 x sc	10	●	980	300	40
EL2 x sc	10	●	840	325	43
EL4 x sc	10	●	840	325	43