

EM powerLED SELFTEST 1 – 2 W

Combined emergency lighting LED driver 1 – 4 W

**Product description**

- _ Emergency lighting LED driver with selftest function
- _ For self-contained emergency lighting
- _ SELV for output voltage < 60 V DC
- _ Low profile casing (21 x 30 mm)
- _ 5 years guarantee

Properties

- _ Mains and emergency operation
- _ Self-test as per IEC 62034
- _ Constant current mode
- _ With either screw or clip fastening (clip-fix)
- _ 1, 2 or 3 h rated duration
- _ Selectable operating time (jumper)
- _ Output power limitation
- _ Two-colour status display LED
- _ "Rest mode" function
- _ Simple set-up
- _ Automatic restart after LED replacement
- _ Electronic multi-level charge system
- _ SELV classified (outputs powerLED, battery, status LED, test switch)
- _ Polarity reversal protection for battery
- _ Deep discharge protection
- _ Very low energy consumption from the battery after activation of the deep discharge protection
- _ Short-circuit-proof battery connection
- _ Emergency lighting LEDs available
 - Self-test:
 - _ Status of the battery
 - _ Status of the LED
 - _ Charge condition
 - _ Function test
 - _ Duration test

Batteries

- _ High-temperature cells 2 Ah
- _ NiMH batteries
- _ Cs cells
- _ 4 year design life
- _ 1 year guarantee
- _ For battery compatibility refer to data sheet

Website

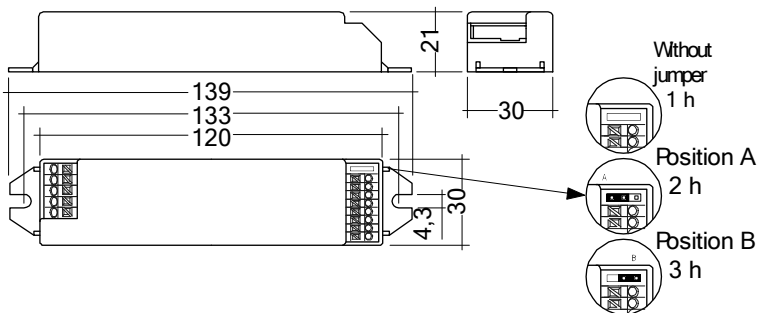
<http://www.tridonic.com/89899861>



EM powerLED SELFTEST 1 – 2 W

Combined emergency lighting LED driver 1 – 4 W

The complete data sheet for this product is available in the Downloads section.



Ordering data

Type [®]	Article number	Dimensions L x W x H	Max. number of LEDs	Packaging, carton	Packaging, pallet	Weight per pc.
Screw fastening version						
EM powerLED 2 W ST SCREW-FIX	89899861	139 x 30 x 21 mm	2	25 pc(s).	1,200 pc(s).	0.056 kg

Technical data

Rated supply voltage	220 – 240 V
Mains frequency	50 / 60 Hz
Forward voltage range LED module (1 x LED) ^①	2.8 – 3.4 V
Forward voltage range LED module (2 x LED) ^①	5.6 – 6.8 V
Max. open circuit voltage	10 V
Mains current, 1 W device	30 mA
Mains current, 2 W device	40 mA
Power in mains operation, 1 W device	3.5 W
Power in mains operation, 2 W device	5 W
Starting time	0.31 s from detection of emergency event
Overvoltage protection	320 V (for 1 h)
Battery discharge current	Refer to data sheet
Max. casing temperature t _c	70 °C
Ambient temperature t _a	-25 ... +50 °C
Mains voltage changeover threshold	According to EN 60598-2-22
Type of protection	IP20
Lifetime	up to 50,000 h
Guarantee	5 Year(s)

Approval marks



Standards

according to EN 50172, according to EN 60598-2-22, EN 61347-2-7, EN 61347-2-13, EN 62384, EN 62034, EN 55015, EN 61000-3-2, EN 61547, EN 60068-2-64, EN 60068-2-29, EN 60068-2-30

Specific technical data

Type	Rated duration	Typ. λ Cat 230 V, 50 Hz	Typ. output power	Forward voltage range LED module	Mains current in charging operation			Mains power in charging		
					Initial charge	Fast recharge	Trickle charge	Initial charge	Fast recharge	Trickle charge
EM powerLED 2 W ST SCREW-FIX	1 / -1 h	0.55C	2 W	-1 – -1 V	14.3 mA	17.3 mA	11.7 mA	1.1 W	1.6 W	0.8 W
EM powerLED 2 W ST SCREW-FIX	2 / -1 h	0.55C	2 W	-1 – -1 V	15.7 mA	20.4 mA	12.8 mA	1.4 W	2.0 W	0.9 W
EM powerLED 2 W ST SCREW-FIX	3 / -1 h	0.55C	2 W	-1 – -1 V	18.4 mA	23.3 mA	14.5 mA	1.7 W	2.4 W	1.2 W

① Tolerance range for electrical data: ±10 %.

② EM = Emergency

③ Maintained operation