

Controllable (1-10 V) electronic ballasts for T5 fluorescent lamps

freedom in lighting

14-80 W 220-240 V, 50-60 Hz

- Switch-Control / Analogue control¹⁾
- Only 21 mm high
- Standard & sidemount possibilities
- Dimming range 1-100 %²⁾
- Microprocessor controlled
- User friendly, quick release connectors
- Low energy consumption
- Stabilised, flickerfree light output



A1

| Lamp type | Wattage | No. of lamps | Ballast | EEI | Dimensions | Connection | Weight | Circuit power | Mains current | Lamp power |
|-----------|---------|--------------|------------------------|-----|------------|------------|--------|---------------|---------------|------------|
| | | | | | | (p.14) | (g) | (W) | (A) | (W) |
| T5 | 14 | 1 | EL1x14sc | A1 | 1 | 8 | 270 | 17 | 0.08-0.07 | 13.7 |
| | 14 | 2 | EL2x14sc | A1 | 2 | 9 | 340 | 31 | 0.15-0.14 | 13.7 |
| | 14 | 4 | EL4x14sc ²⁾ | A1 | 2 | 10 | 340 | 62 | 0.29-0.27 | 13.7 |
| | 21 | 1 | EL1x21sc | A1 | 1 | 8 | 270 | 24 | 0.11-0.10 | 20.7 |
| | 21 | 2 | EL2x21sc | A1 | 2 | 9 | 340 | 46 | 0.22-0.20 | 20.7 |
| | 24 | 1 | EL1x24sc | A1 | 1 | 8 | 270 | 26 | 0.13-0.12 | 22.5 |
| | 24 | 2 | EL2x24sc | A1 | 2 | 9 | 340 | 50 | 0.24-0.20 | 22.5 |
| | 28 | 1 | EL1x28sc | A1 | 1 | 8 | 270 | 31 | 0.15-0.14 | 27.8 |
| | 28 | 2 | EL2x28sc | A1 | 2 | 9 | 340 | 64 | 0.30-0.28 | 27.8 |
| | 35 | 1 | EL1x35sc | A1 | 1 | 8 | 270 | 39 | 0.18-0.17 | 34.7 |
| | 35 | 2 | EL2x35sc | A1 | 2 | 9 | 340 | 78 | 0.36-0.34 | 34.7 |
| | 39 | 1 | EL1x39sc | A1 | 1 | 8 | 270 | 42 | 0.20-0.18 | 38 |
| | 39 | 2 | EL2x39sc | A1 | 2 | 9 | 340 | 83 | 0.40-0.36 | 38 |
| | 49 | 1 | EL1x49sc | A1 | 1 | 8 | 270 | 55 | 0.25-0.23 | 49.3 |
| | 49 | 2 | EL2x49sc | A1 | 2 | 9 | 340 | 106 | 0.50-0.46 | 49.3 |
| | 54 | 1 | EL1x54sc | A1 | 1 | 8 | 270 | 61 | 0.28-0.26 | 53.8 |
| | 54 | 2 | EL2x54sc | A1 | 2 | 9 | 340 | 118 | 0.53-0.49 | 53.8 |
| 80 | 1 | EL1x80sc | A1 | 1 | 8 | 270 | 88 | 0.41-0.38 | 80 | |

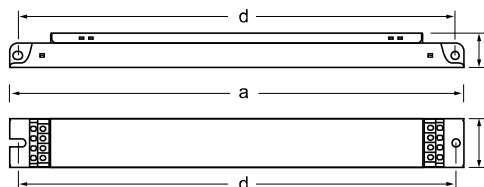
Note: See pages 14-17 for connection diagrams and additional characteristics.

1) Simultaneous lighting control by Switch-Control and Analogue control

2) Dimming range 3-100 % for EL 4x14sc

For information on compatibility with amalgam lamps, please contact your local Helvar representative.

| Dimensions | 1 | 2 |
|-----------------|-----|-----|
| Length 'a' (mm) | 360 | 430 |
| Width 'b' (mm) | 30 | 30 |
| Height 'c' (mm) | 21 | 21 |
| 'd' (mm) | 350 | 420 |



| Delivery information | | | | | |
|----------------------|-------------------------|-----------------------|------------------------------|--------------------|--------------------|
| Ballast | Unit package | | Transportation package | | |
| | Minimum delivery amount | Plastic binding strip | EUR pallet 1200 x 800 (pcs.) | Pallet weight (kg) | Pallet height (cm) |
| EL1 x sc | 10 | ● | 980 | 300 | 40 |
| EL2 x sc | 10 | ● | 840 | 325 | 43 |
| EL4 x sc | 10 | ● | 840 | 325 | 43 |

Controllable (1-10 V) electronic ballasts for T5-eco fluorescent lamps *freedom in lighting*

14-80 W 220-240 V, 50-60 Hz

- Switch-Control / Analogue control ¹⁾
- Only 21 mm high
- Standard & sidemount possibilities
- Dimming range 1-100 % ²⁾
- Microprocessor controlled
- User friendly, quick release connectors
- Low energy consumption
- Stabilised, flickerfree light output



A1

| Lamp type | Wattage | No. of lamps | Ballast | EEI | Dimensions | Connection | Weight | Circuit power | Mains current | Lamp power ³⁾ |
|---------------|---------|--------------|------------------------|-----|------------|------------|--------|---------------|---------------|--------------------------|
| | | | | | | (p.14) | (g) | (W) | (A) | (W) |
| T5 eco | 14 eco | 1 | EL1x14sc | A1 | 1 | 8 | 270 | 17 | 0.08-0.07 | 13.7 |
| | 14 eco | 2 | EL2x14sc | A1 | 2 | 9 | 340 | 31 | 0.15-0.14 | 13.7 |
| | 14 eco | 4 | EL4x14sc ²⁾ | A1 | 2 | 10 | 340 | 62 | 0.29-0.27 | 13.7 |
| | 21 eco | 1 | EL1x21sc | A1 | 1 | 8 | 270 | 24 | 0.11-0.10 | 20.7 |
| | 21 eco | 2 | EL2x21sc | A1 | 2 | 9 | 340 | 46 | 0.22-0.20 | 20.7 |
| | 24 eco | 1 | EL1x24sc | A1 | 1 | 8 | 270 | 26 | 0.13-0.12 | 22.5 |
| | 24 eco | 2 | EL2x24sc | A1 | 2 | 9 | 340 | 50 | 0.24-0.20 | 22.5 |
| | 28 eco | 1 | EL1x28sc | A1 | 1 | 8 | 270 | 31 | 0.15-0.14 | 27.8 |
| | 28 eco | 2 | EL2x28sc | A1 | 2 | 9 | 340 | 64 | 0.30-0.28 | 27.8 |
| | 35 eco | 1 | EL1x35sc | A1 | 1 | 8 | 270 | 39 | 0.18-0.17 | 34.7 |
| | 35 eco | 2 | EL2x35sc | A1 | 2 | 9 | 340 | 78 | 0.36-0.34 | 34.7 |
| | 49 eco | 1 | EL1x49sc | A1 | 1 | 8 | 270 | 55 | 0.25-0.23 | 49.3 |
| | 49 eco | 2 | EL2x49sc | A1 | 2 | 9 | 340 | 106 | 0.50-0.46 | 49.3 |
| | 54 eco | 1 | EL1x54sc | A1 | 1 | 8 | 270 | 61 | 0.28-0.26 | 53.8 |
| | 54 eco | 2 | EL2x54sc | A1 | 2 | 9 | 340 | 118 | 0.53-0.49 | 53.8 |
| | 80 eco | 1 | EL1x80sc | A1 | 1 | 8 | 270 | 88 | 0.41-0.38 | 80 |

Note: See pages 14-17 for connection diagrams and additional characteristics.

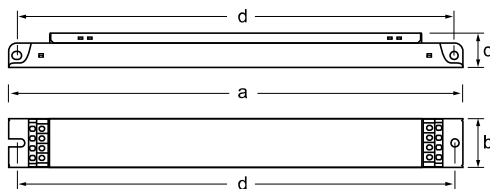
1) Simultaneous lighting control by Switch-Control and Analogue control

2) Dimming range 3-100 % for EL 4x14sc

3) Powercontrolled products, no energy saving when ecolamps are used. Lamps are running over powered.

For information on compatibility with amalgam lamps, please contact your local Helvar representative.

| Dimensions | 1 | 2 |
|-----------------|-----|-----|
| Length 'a' (mm) | 360 | 430 |
| Width 'b' (mm) | 30 | 30 |
| Height 'c' (mm) | 21 | 21 |
| 'd' (mm) | 350 | 420 |



| Delivery information | | | | | |
|----------------------|-------------------------|-----------------------|------------------------------|--------------------|--------------------|
| Ballast | Unit package | | Transportation package | | |
| | Minimum delivery amount | Plastic binding strip | EUR pallet 1200 x 800 (pcs.) | Pallet weight (kg) | Pallet height (cm) |
| EL1 x sc | 10 | ● | 980 | 300 | 40 |
| EL2 x sc | 10 | ● | 840 | 325 | 43 |
| EL4 x sc | 10 | ● | 840 | 325 | 43 |