

# AC 164 STF/ 5    AC 164 BUF/ 5

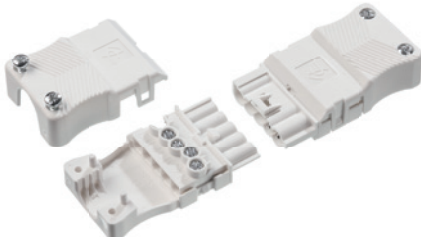
## Montageanleitung

*Assembling instruction*



**AC 164 STF/ 5**  
AC 164 STF/ 5

**AC 164 BUF/ 5**  
AC 164 BUF/ 5



### POSITIONIERUNG DER ZUGENTLASTUNGSBRÜCKEN

*Positioning of the Strain Relief Bridges*

**0,5 - 1,5**  
mm<sup>2</sup>

**16 A**  
250/400 V

**0,5 Nm**

**5 POLE    Ø 6,5 - 11,5 mm**

<b>POS. 02</b>	X	X	Ø 7,8 - 8,6	Ø 8,7 - 9,5	≥ Ø 10,8
<b>POS. 01</b>	Ø 6,5 - 7,1	Ø 7,2 - 7,7	X	Ø 9,6 - 10,7	

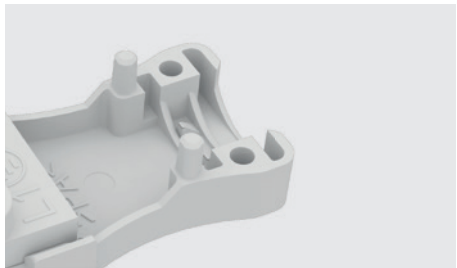
### KABELDURCHMESSER ERMITTELN

*Determining the cable diameter*



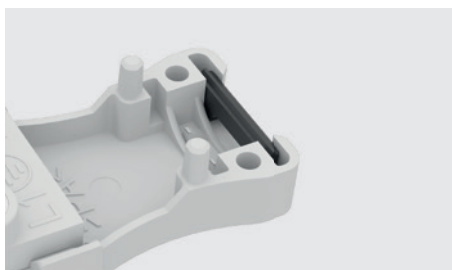
### KEINE ZEL-BRÜCKE

*No ZEL insert*



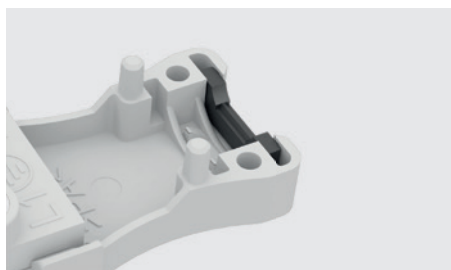
## ZEL-BRÜCKE AN POS. 1

ZEL insert on pos. 1



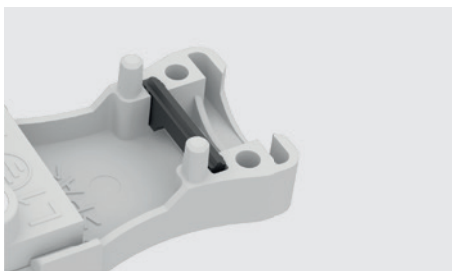
## ZEL-BRÜCKE GEDREHT AN POS. 1

ZEL insert turned on pos. 1



## ZEL-BRÜCKE AN POS. 2

ZEL insert on pos. 2



## ZEL-BRÜCKE GEDREHT AN POS. 2

ZEL insert turned on pos. 2

