

Motion detector - Professional Line

# sensIQ

EVO Anthracite

EAN 4007841 056636

Article number 056636



infrared sensor 3 x  
100°



3 zones scalable  
2-20m

2500 W

2500 W max.  
(LED-ready)



IP54



2 - 2000 lux



5 sec - 15 min



ideal 2 - 5 m



energy saving

5 years



manufacturer's  
warranty  
[steinel-professional.de/garantie](https://www.steinel-professional.de/garantie)

## Function description

King of the infrared motion detectors. The revolutionary sensIQ for indoors and out, ideal for building entrances, loading bays, installation height up to 5 m, quadruple sensor system for optimum coverage over a 300° detection angle, 20 m range (tangential), metre-precision reach setting in 3 different directions, heavy-duty relay for high switching capacity. Remote control and corner wall mount bracket included.

## Technical specifications

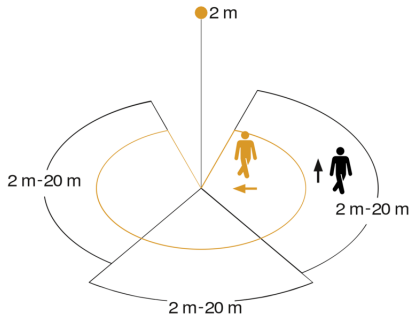
Type	Motion detectors
Type of accessory	Corner adapter
Dimensions (L x W x H)	172 x 113 x 144 mm
Mains power supply	230 V / 50 – 60 Hz
Sensor Technology	passive infrared
Application, place	Indoors, Outdoors
Installation site	wall, ceiling, corner
Installation	Surface wiring
Mounting height	2,00 – 5,00 m
Reach, radial	r = 4 m (42 m <sup>2</sup> )
Reach, tangential	r = 20 m (1047 m <sup>2</sup> )
Reach, detail	Reach adjustable from 2 - 20 m in 3 directions (100° in each)
Detection angle	300 °
Angle of aperture	180 °
Switching zones	1360 switching zones
Optimum mounting height	2 m
Mechanical scalability	Yes
Sneak-by guard	Yes
Capability of masking out individual segments	Yes
Electronic scalability	No
Twilight setting TEACH	Yes
Twilight setting	2 – 2000 lx
Time setting	5 s – 15 Min.
Output	2500 W
Fluorescent lamps, electronic ballast	1500 W

Fluorescent lamps, uncorrected	1000 VA
Fluorescent lamps, series-corrected	1800 VA
Fluorescent lamps, parallel-corrected	500 VA
Switching output 1, low-voltage halogen lamps	2300 VA
LED lamps	16 W
LED lamps > 2 W	64 W
LED lamps > 8 W	64 W
Capacitive load in µF	176 µF
Constant-lighting control	No
Basic light level function	No
Functions	Normal / test mode, Manual ON / ON-OFF
Einstellungen via: Connect Bluetooth Mesh	Remote control, Potentiometers, Smart Remote
With remote control	Yes
Interconnection	Yes
Type of interconnection	Master/master
IP-rating	IP54
Material	Plastic
Ambient temperature	-20 – 50 °C
Application, room	multi-storey / underground car park, outdoors, warehouse, front door, all round the building, courtyard & driveway, Indoors
Colour	Anthracite
Colour, RAL	7016
IDs, certificates	VDE
Manufacturer's Warranty	5 years
Version	Anthracite
PU1, EAN	4007841056636

## Accessories

EAN 4007841 009151	Remote control Smart Remote
EAN 4007841 007638	Remote control RC9

## Detection Zone



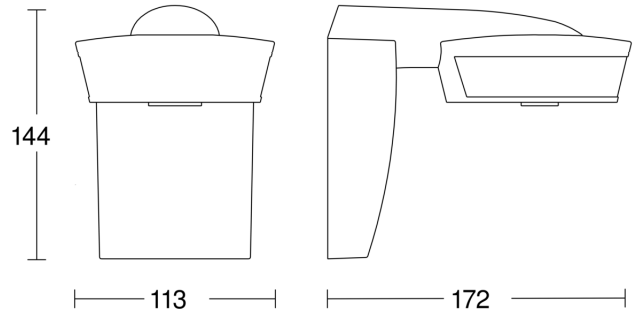
Mögliche Montagehöhe: 2,00 m – 5,00 m

Orange: radial

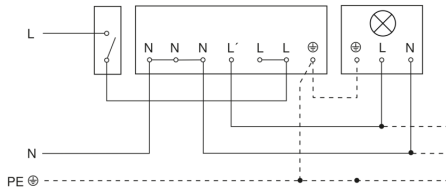
Schwarz: tangential

3 skallerbare Zonen

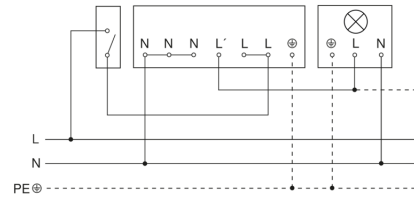
## Dimension Drawing



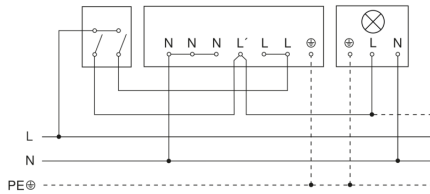
## Light without neutral conductor



## Light with neutral conductor



## Connection using two-circuit switch for manual and automatic operation



## Connection via a two-way switch for manual override and automatic operation

